

**west midlands teaching public health network**

**WEST MIDLANDS TEACHING PUBLIC HEALTH NETWORK**

**2007/2008 ANNUAL REPORT**

**John Middleton  
Cathleen Manancourt  
and the Executive Group of the  
WEST MIDLANDS TEACHING PUBLIC HEALTH NETWORK**

**June 2008**

Copies of this document can be downloaded from:  
[www.wmpho.org.uk/westmidstphn](http://www.wmpho.org.uk/westmidstphn)



## **Our Vision**

**To increase the standard, range and availability of public health training in the West Midlands, in order to improve the health of the region's population**

## Executive Summary

Teaching Public Health Networks were established by the Department of Health in 2006 to improve the quality and consistency of public health teaching. In particular they are measured on:-

- Evidence of curricular change and increased public health knowledge and competence across a range of disciplines
- Evidence of increased public health educator capacity through the academic and service PH workforce working more closely together, and better interdisciplinary and inter-professional working

The Executive Group identified inter-professional learning and the development of the wider public health workforce as the areas the network would lead on within the national group of teaching public health networks. Both are integral to the major initiatives progressed by network members.

The Executive Group has identified the following as its key strategic objectives

- Develop a regional framework for the commissioning of public health teaching
- Enhance public health teaching in order to develop a strong public health workforce with active career pathways
- Encourage organisational development, recognition and utilisation of public health competence at all levels of the wider workforce across the public and independent sectors
- Initiate the application of funding streams to secure sustainability of the network and its development work

There are three major areas of activity the network has identified as essential elements of its programme of work.

- Establishment of Inter-professional Learning as routine for public health teaching
- Application of the Public Health Career and Skills Framework to the assessment of training need and the commissioning of public health teaching
- Development of an on-line Skills Escalator Tool to support career development for the wider workforce in Public Health which will facilitate real time access to course content and modes of delivery of public health teaching across the West Midlands and beyond

For each of these areas of work the West Midlands is working collaboratively with national centres of excellence such as Skills for Health, Public Health Research Unit, and Centre for the Advancement of Inter-professional Education.

## Contents

Introduction	6
The programme of work for 2007 – 2008	7
Review of Progress in 2007-2008	8
Establishment of Inter-professional Learning as routine for public health teaching	10
<ul style="list-style-type: none"><li>○ Local Strategic Partnerships</li><li>○ Local Authority Front line Staff</li><li>○ E-learning for multi-disciplinary teams</li><li>○ Training Needs Assessment</li><li>○ Collaborative Commissioning</li></ul>	
Application of the Public Health Career and Skills Framework to the assessment of training need and the commissioning of public health teaching	14
<ul style="list-style-type: none"><li>○ Public Health Themes and Pilot Teams</li><li>○ The Public Health Career and Skills Framework</li><li>○ Training Needs Assessment</li><li>○ Commissioning public health teaching</li><li>○ Project Evaluation</li></ul>	
Development of an on-line Skills Escalator Tool to support career development for the wider workforce in Public Health which will facilitate real time access to course content and modes of delivery of public health teaching across the West Midlands and beyond	17
<ul style="list-style-type: none"><li>○ Defining Public Health Roles for those participating in public health and career pathways</li><li>○ Mapping public health content in wide range of curricula</li><li>○ Action at National and Regional levels</li></ul>	
Stakeholder Events	19
Action Plan 2008-2011	20
Appendices	
1. Patrons of the West Midlands Teaching Public Health Network	
2. Membership of the executive group	
3. Membership of the wider stakeholder group	

## **Introduction**

The West Midlands Teaching Public Health Network is part of a national programme funded by the Department of Health and hosted in this region by Sandwell Primary Care Trust

The Teaching Public Health Network is committed to providing a forum in which providers will be able to discuss standards and plan joint initiatives including region wide teaching packages. The network aims to provide education commissioners with the opportunity to share intelligence and drive up standards and reward best practice. It gives public health services a voice and vehicle to set priorities against choosing health objectives by which to shape public health training.

### ***Key objectives***

- Develop a regional framework for the commissioning of public health teaching
- Enhance public health teaching in order to develop a strong public health workforce with active career pathways
- Encourage organisational development, recognition and utilisation of public health competence at all levels of the wider workforce across the public and independent sectors

### ***Network Membership***

John Middleton is Network Lead and Director of Public Health, Sandwell PCT  
Cathleen Manancourt is the Network Manager

The activities of the network are prioritised through an Executive Group with representation from:

- NHS West Midlands
- West Midlands Workforce Deanery
- West Midlands Public Health Observatory
- Government Office West Midlands
- Learning and Skills Council West Midlands
- Local Authorities
- Universities, Colleges and Schools
- Primary Care Trusts
- West Midlands Local Government Agency
- West Midlands Life Long Learning Networks

### ***The network's national role***

The network has the national lead for inter-professional learning and the development of public health teaching for the wider public health workforce

### ***Department of Health Performance Measures***

- Evidence of curricular change and increased public health knowledge and competence across a range of disciplines
- Evidence of increased public health educator capacity through the academic and service PH workforce working more closely together, and better interdisciplinary and inter-professional working
- Create health promoting Universities and Colleges

## The programme of work for 2007 – 2008

***The network during this period has been concerned with promoting engagement of key stakeholders, prioritising action and securing funding to set up relevant projects***

1. In order to deliver one of the Network objectives to expand the public health workforce creating a more health literate public, supporting local community development and the voluntary sector, the network has offered in partnership with the Open University a certificate course in Public Health to NHS, local authority and voluntary sector employees. Thirty places were taken in 2007 and based on initial evaluation the opportunity has been made available again in 2008.
2. A project to be set up to test the application of the Public Health Career and Skills Framework for a range of Public Health issues as part of the national Skills for Health Programme.
  - Smoking cessation during pregnancy
  - Childhood obesity and weight management
  - Infant mortality
  - Sexual health and teenage pregnancy
  - Alcohol misuse

The project sites received inter-professional learning sessions at the beginning to create the conditions for recognising and engaging the wider public health workforce related to their public health theme. The learning from the projects will be used to develop a public health training needs analysis tool. A national conference will be held in the West Midlands to share the findings and launch the project report
3. Coventry University was sponsored to develop and deliver a public health programme for Local Strategic Partnerships across the West Midlands. .
4. Funding was provided by the Department of Health West Midlands to scope public health training needs for the implementation of the Regional Assembly's Spatial Plan
5. A programme for the development of an on-line distance learning package for levels three and four of the workforce in the NHS, Local Authorities and the Independent Sector was established
6. Initial work took place to define a project which will demonstrate the impact of urban planning on the mental health of young children and their families and produce an inter-professional training course for urban planners and public health and mental health professionals
7. Keele University piloted the application of the Public Health Career and Skills Framework to inform other HEIs how to redefine and develop the courses they offer with a total or partial public health content
8. The network carried out exploratory meetings to introduce public health to a range of CPD programmes in the NHS and Local Authorities

# Review of Progress in 2007-2008

## Promoting Engagement

*A network with a concern for the teaching of public health that cuts across organisational boundaries, recognises all levels of the workforce and of education and is serious about learning how it can be done better, through its commitment to sharing knowledge, working together on problems and setting up projects to test ideas, challenge understanding and make improvements*

Engagement has been promoted in the following ways

- Teaching Public Health Network Website [www.wmpho.org.uk/westmidstphn](http://www.wmpho.org.uk/westmidstphn)
- Newsletter circulated to a continually growing stakeholder group and available on the website
- WMPHN Stand, bringing a presence to regional and national events and reflecting the activity of the network
- Participation in key events in the West Midlands and Nationally. We hold regular stakeholder events, contribute to national learning events and participate in events run by other Teaching Public Health Networks in England
- Reporting to Regional Director's of Public Health Group. This group receives the newsletter and a regular update at meetings chaired by the regional Director of Public Health, Rashmi Shukla
- Commissioning projects from the pool of expertise within the network membership

## Prioritising action

*There are a number of regional strategic documents that have been key to the activity of the network in its aim to develop the teaching that will support the future public health workforce in delivering the public health agenda.*



## Regional Health and Well-Being Strategy

Overall vision:

“To maintain, enhance, improve and protect the health and well-being of people in the region and to reduce health inequalities by 2020 within environmental limits, so not to compromise healthy life for future generations”



## Securing funding to set up relevant projects

£24,000 has been secured from the Teaching Public Health core budget to support forty local students to do the Open University course “Promoting Public Health: skills, perspectives and practice” Set at Level 3 with an allocation of 60 cats points

The NHS West Midlands Workforce Deanery has identified £235,000 for 6 pilots applying the Public Health Career and Skills Framework to the assessment of training need and the commissioning of public health teaching

£50,000 for the development of a distance learning package for levels 3 and 4 of the public health workforce in the NHS, local authorities and the independent sector

£35,000 for the development of an inter-professional course based on the impact of urban planning on the mental well-being of young children and their families

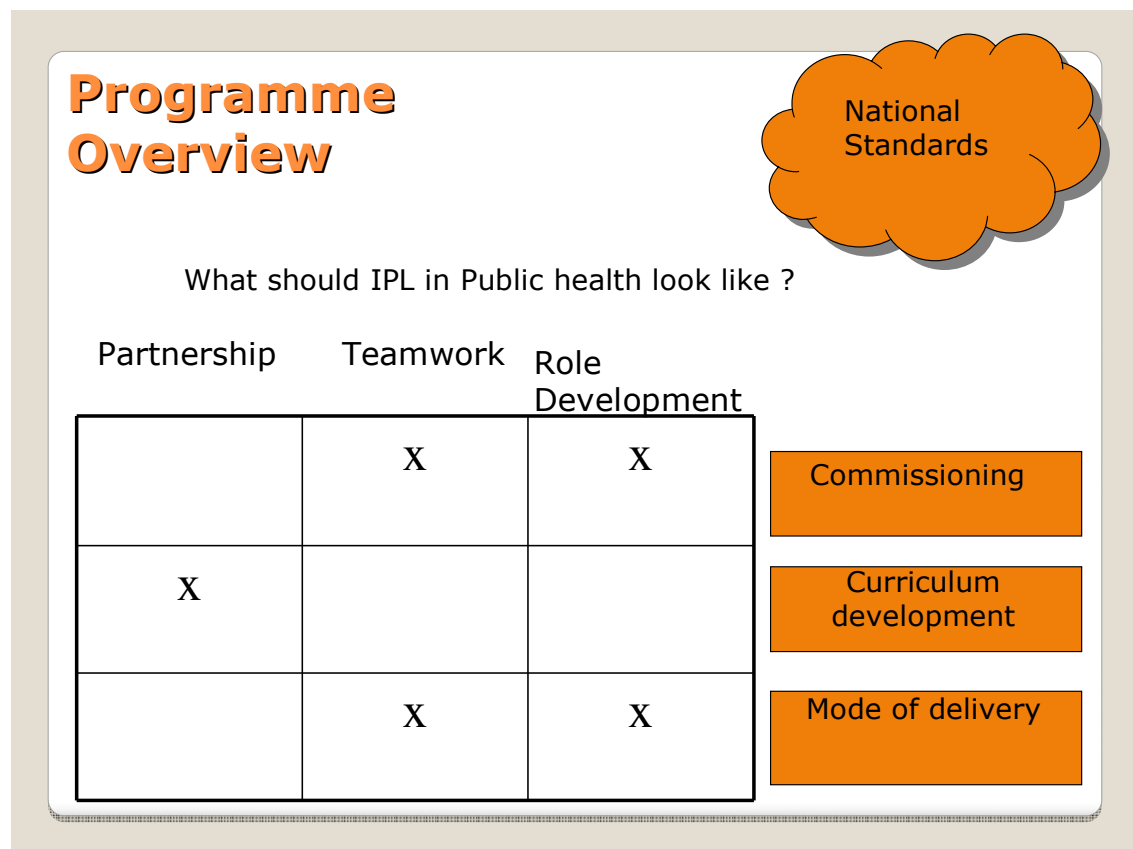
The Department of Health West Midlands has granted a sum of £7,500 to carry out a scoping exercise to determine training required to integrate the public health agenda with the delivery of the West Midlands Regional Assembly’s Spatial Strategy.

# Establishment of Inter-professional Learning as routine for public health teaching

Work to establish IPL as routine for public health has focused on

- Awareness raising through conference proceedings and stakeholder events
- The promotion of enabling strategies – through staff development workshops
- Maximising opportunities for developers of IPL to share experiences
- The promotion and Evaluation of IPL in commissioned work across the network
- Harnessing opportunities to tender for IPL Projects
- Tenders for e-enabled inter-professional learning
- The piloting of online approaches to IPL
- The evaluation of IPL within the context of the PHSCF
- The development of interdisciplinary modules to provide a platform for interdisciplinary and shared learning

In working towards the development of national standards, particular attention has been paid to the outcomes of IPL for partnerships, teamwork and role development in the context of commissioning, curriculum development and platforms or modes of delivery as shown in the matrix below.



## Developing the Public Health Competences of Members of Local Strategic Partnerships

Local Strategic Partnerships are emerging as a key player in the long-term strategy to reduce health inequalities. The recently published **West Midlands Health and Well-being Strategy** provides the road map. Local Area Agreements provide the resources and the motivation.

But how well prepared are LSP members to fulfil these new public health responsibilities? Most have established health and well-being sub-groups; but, if they are to reach their full potential, public health goals will need to be written across the entire spectrum of partnership working, and all partnership members will need to be called upon to make a contribution.

WMPHTN is offering a series of workshops aimed at developing the public health competencies of members of Local Strategic Partnerships. The content of each workshop is individually negotiated to reflect local priorities and circumstance as assessed against the overall strategy provided by the West Midlands Regional Health Partnership. Workshops range from a broad discussion, of the role of the Local Strategic Partnership in achieving public health objectives, to a more technical consideration, of how to undertake a Health Impact Assessment of policies and plans primarily developed to meet the objectives of other sectors.

### ***An illustrative one-day workshop consisting of five 1+ hour sessions might be:***

#### *The Public Health Perspective*

The Scope of Public Health – Health Protection and Disease Prevention - Refocusing Upstream – Health Inequalities – West Midlands Health and Well-being Strategy - Dahlgren and Whitehead – Life Course Models – Intersectoral Working – Vertical and Horizontal Partnerships

#### *Community Health Development*

Case Studies selected to demonstrate contrasting models and impacts of approaches to community engagement – Social marketing

#### *Health Impact Assessment*

Workshop activity around pre-selected local proposals to demonstrate the HIA approach – Regional Spatial Strategy for the West Midlands

#### *Measuring the Health of Urban Populations – Information Needs*

Evidence-based public policy – aspects of epidemiology - Integration of disparate information systems: Health Status, Health Determinants, Population Structure – a guided discussion on information needs, data pooling and data synergy

#### *Public Health and the Media*

Getting the public health message across

## Local Authority Front line Staff

A range of approaches have been made with the objective of engaging local authority staff in inter-professional learning in support of improving public health competence. During the course of this, the need for officers to satisfy the CPD requirements of professional bodies was identified as a likely route to engagement. Key areas of activity in support of developing public health competence through inter-professional learning include:

- Presentations to and discussions with West Midlands Heads of Environmental Health. This is on-going and intended to result in commitment to inter-agency learning and public health CPD opportunities. A joint workshop on health inequalities is currently under development in Dudley.
- Contribution to the steering group for the Birmingham City/IDeA Social Care pilot intended to develop the public health competence of home care staff.
- Presentations and discussions at meetings of the Chartered Institute of Environmental Health both nationally and locally. The notion of inter-professional learning and public health content of CPD has been promoted. Further developments are expected in 2008/2009.
- From discussion with LSP's, the need for HIA training was identified by the Herefordshire Partnership. The WMTPH Network was able to identify a suitable provider and a workshop is under development for delivery shortly.
- Other areas are being investigated including the inter-professional opportunities between certain university courses, the possibility of rolling out a Public Health Practice Development Programme and the opportunities to influence the public health content of CPD required by other professional bodies.

## E-learning for mutlidisciplinary teams

*Public Health Distance Learning Course Warwickshire PCT with expertise from Education for Health*

Practitioners on levels 5 – 8 can access courses run by The Faculty of Public Health, local universities and the Open University. Currently there are no national courses that support the development of the staff on levels 1 – 4. It is this group of staff that a distance-learning course would be the most appropriate format in the first instance. The main Aim of the course will be to provide participants with an increased awareness of health improvement – its theory and practice, in the context of their area of work.

The key components this generic module will cover are:

- Exploration of the terms – health, health education, health promotion and public health and the factors which influence and impact on an individual's and community's health
- The variety of methods used in health improvement, including communication skills, the mass media, group work skills choosing and using resources effectively
- Models of behaviour change and health improvement

- Identifying the key health improvement priorities
- How to plan deliver and evaluate health improvement programmes
- Ethics

### *Staffordshire University*

Staffordshire offers two online public health Masters awards, the Masters in Public Health (MPH) and MSc in Physical Activity and Public Health. Both are delivered entirely online, including examinations, though all students are required to attend for an oral presentation and viva voce, prior to completing the award. The courses are designed to expand on the knowledge and skills required for practice in the fields of public and community health and provide broad-based training in the core functions and disciplines of public health. The MPH covers aspects of all 10 core public health competencies, and the MSc is designed to prepare professionals to play an integral role as community physical activity specialists. All modules can be studied on an individual basis.

### *Wolverhampton University*

Is designing a problem based e-learning package to *assist* the development of Inter-professional practice in smoking cessation using:

- Case studies
- Problem based learning materials

Including an online forum for each user to post messages and ask others opinions and advice

### **Training Needs Assessment for priority public health issues**

Inter-professional group work has been used to:

- Raise awareness of care pathways
- For participants to understand their own and other professional roles in relation to care pathways
- identify other roles that may have been missed
- Identify skills and competencies to deliver care pathway
- Identify training required

### **Collaborative Commissioning**

Inter-professional learning will be considered as a mode of delivery for training to be commissioned where there would be added value. Collaborative commissioning will serve to emphasise where inter-professional learning needs to be adopted by teaching providers.

Inter-professional learning will also be used as an approach to collaborative commissioning to ensure training for the wider public health workforce is cost effective, inclusive of relevant public health roles and matches the “organisational” requirements for the wider public health workforce to work collaboratively.

# Application of the Public Health Career and Skills Framework to the assessment of training need and the commissioning of public health teaching

## Public Health Themes and Pilot Teams

1. Childhood Obesity and Nutrition (two Pilots)  
*Birmingham East and North PCT and Worcestershire PCT*
2. Infant Mortality  
*South Staffordshire PCT*
3. Teenage Pregnancy and Sexual Health  
*Stoke on Trent PCT*
4. Smoking Cessation During Pregnancy  
*Sandwell PCT*
5. Substance Misuse and Mental Health  
*South Staffordshire PCT*

## The Public Health Career and Skills Framework

Inter-professional learning was introduced at the outset to facilitate the pilots in:-

- Identifying the wider workforce
- Managing team workshops
- Validation of findings
- Commissioning the Delivery of Public Health Teaching

The Public Health Career and Skills Framework

Public health is divided into nine main areas of work and this is reflected in the PHSCF. It consists of four Core Areas which represent areas that anyone working in public health will need to know about and have some competence within, and five Defined Areas which represent the contexts in which people principally work.

### PHSCF Areas

Core areas	Defined areas
<ol style="list-style-type: none"> <li>1. Surveillance and assessment of the population's health and wellbeing</li> <li>2. Assessing the evidence of effectiveness of interventions, programmes and services to improve population health and wellbeing</li> <li>3. Policy and strategy development and implementation for population health and wellbeing</li> <li>4. Leadership and collaborative working for population health and wellbeing</li> </ol>	<ol style="list-style-type: none"> <li>5. Health improvement</li> <li>6. Health protection</li> <li>7. Public health intelligence</li> <li>8. Academic public health</li> <li>9. Health and social care quality</li> </ol>

Each PHSCF area includes nine levels and competence and knowledge statements which describe what is expected at each level. Level 1 represents

people who have little previous knowledge, skills or experience in public health while Level 9 is where people will be setting strategic priorities and direction and providing leadership to improve population health and wellbeing. The levels are cumulative so it is expected that someone working at the higher levels has already developed, or would have the capability to develop, the competences and knowledge in levels below the level at which they are working. The statements of competence and knowledge capture the essence of working at that level when an individual is fully developed at that level of work i.e. the PHSCF is designed to inform individual's development and be realistically aspirational.

The PHSCF can be used for:

- describing and demonstrating the competences different professions bring to improving public health
- informing and facilitating closer working relationships across professional groups
- informing development planning for individuals, teams and professional groups

When training packages are being developed the advantage of using the PHSCF to identify the content of that training is that the competences become the 'show hows' while the supporting knowledge has the correct weight and becomes the 'know hows' which training providers can relate to any public health topic. In addition the PHSCF has been referenced to relevant National Occupational Standards which can provide further training resources.

The PHSCF development was led by Skills for Health, commissioned via DH England and supported by the Public Health Resource Unit (PHRU) who co-ordinated and provided public health professional input. The PHSCF has been endorsed by the four UK Departments of Health who are supporting a programme of implementation and by public health professional organisations and groups across the UK.

For further information the PHSCF can be viewed and/or downloaded from [www.phru.nhs.uk](http://www.phru.nhs.uk) and [www.skillsforhealth.org.uk](http://www.skillsforhealth.org.uk)

### **Training Needs Assessment**

Following the completion of the Public Health Career and Skills Framework Pilots, the three project facilitators will use the material from the 6 pilots to assemble a training needs assessment tool. Dissemination of findings from the project will progress in phases

1. Training needs assessment tool to be completed by September 2008
2. Mainstreaming process to be agreed with commissioners at learning event in September 2008
3. Launch of project report and the training needs assessment tool at the Teaching Public Health Network, Wider Stakeholder Group Event, October 2008

### **Commissioning public health teaching**

The final project workshop in June 2008 will consider how best the training needs identified can be commissioned based on the views developed by each

of the pilots. Where there are commonalities the feasibility / desirability of collaborative commissioning will be determined. Opportunities for inter-professional learning will be highlighted and where distance or blended learning would be of added value.

This will provide an important part of the background material for the development of a commissioning framework which will be further augmented by the debate with teaching providers on options for developing public health teaching capacity in the West Midlands.

### **Project Evaluation**

A longitudinal qualitative evaluation of staff experiences of piloting the public health skills and career framework is scheduled to complete August 2008.

This evaluation focuses on the work of 5 west midlands pilot groups from:

- Birmingham East and North PCT
- Sandwell PCT
- Worcester PCT
- South Staffordshire PCT
- Stoke PCT

Each pilot group is seeking to map the competencies and skills of new roles in addressing topical health issues such as smoking cessation (Sandwell PCT) within the community. These roles will then be mapped onto the public health career and skills framework.

### **OUTCOMES TO BE EVALUATED**

The evaluation aims to

- a) Chart the process of competency mapping to yield a public health workforce needs analysis.
- b) Explore the inter-professional learning (IPL) and collaboration present within the process of defining and mapping these new roles onto the public health skill escalator, for each of the five pilot groups.
- c) Assess the impact of the pilot programme on choice of public health training commissions

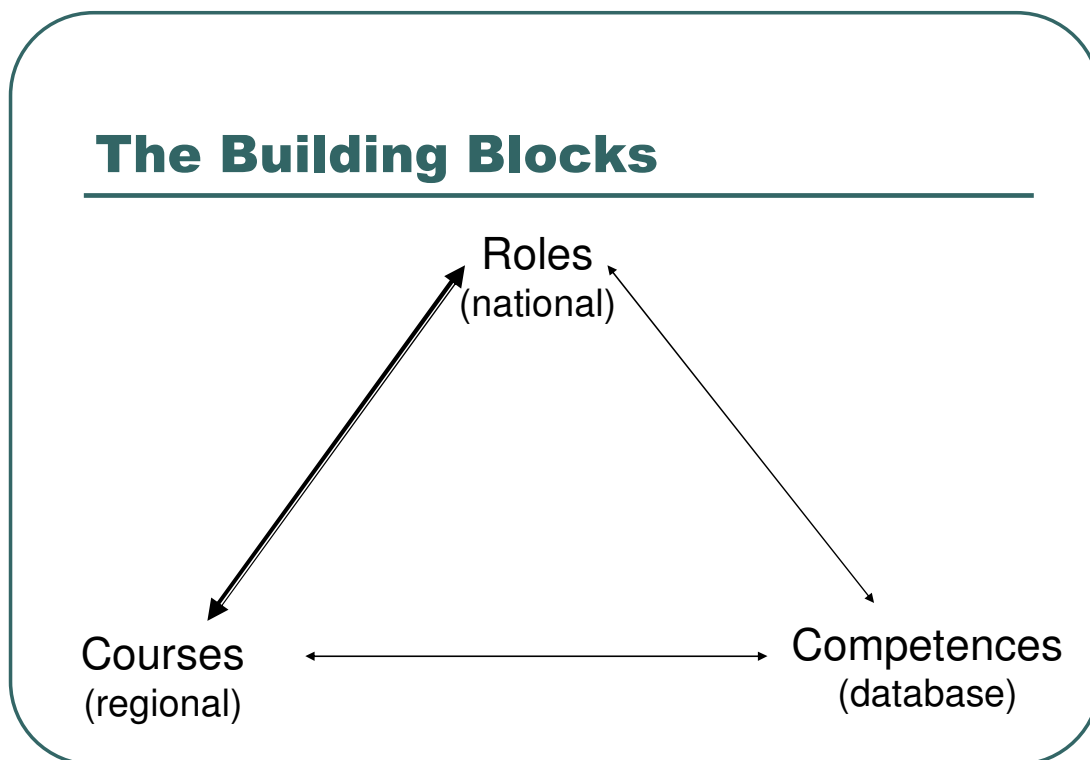
**Before:** Evaluate readiness for the pilots for inter-professional collaboration and their expectations of the public health careers framework

**During:** Assess how the pilots are going; and factors influencing the development of a public health workforce

**After:** Success of the pilots in terms of Collaboration, readiness for IPL and how the identification of the public health workforce competencies affects the choice of training commissions

This evaluation is concerned with the evaluation of the application of the public health careers framework and has 3 assessment periods; before during and immediately after the pilot programme. Five pilots comprising ten-fifteen public health staff have been recruited. A 'repeated measures and longitudinal design' is used, in conjunction with a retrospective survey method, interviews and naturalistic observation for data collection. The type of design employed allows application of the same types of data collection methods across several time periods. This process is scientifically robust and will allow the research team to chart the application of the public health careers framework and examine its impact upon Inter-professional learning over time. Qualitative data will be analysed using the NVivo 7 software and quantitative/descriptive data will be examined with SPSS.

# Development of an on-line Skills Escalator Tool to support career development for the wider workforce in Public Health which will facilitate real time access to course content and modes of delivery of public health teaching across the West Midlands and beyond



## Defining Public Health Roles for those participating in public health and career pathways

The on-line skills escalator will enable individuals to consider a range of career pathways and commissioners of public health teaching to underpin strategic workforce planning

Job Family	Job Role	Indicative job titles
Health promotion and improvement	Community development	Health trainer Community health development officer
	Community nursing	Health visitor School nurse
	Health promotion	Health promotion officer Sexual health advisor Accidents prevention researcher Public Health Pharmacist
	Health improvement	Consultant in public health Health improvement manager Healthy walks coordinator Social exclusion officer Public health nutritionist

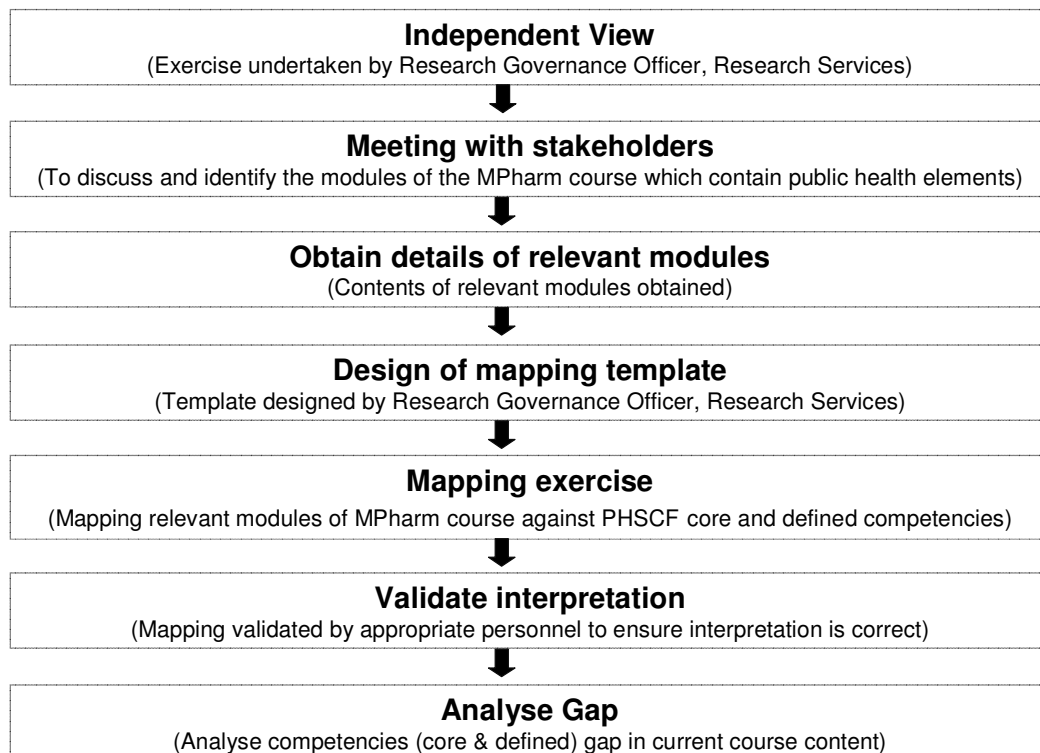
The Public Health Career and Skills Framework competences will be grouped to describe job roles which will be related to indicative job titles and to an overall job family. An illustration is given above

## Mapping public health content in wide range of curricula

Teaching Providers will be asked to map their public health courses and other courses with significant public health content against the Public Health Career and Skills Framework and enter this information onto the skills escalator. Initial work has been carried out at Keele University to map a Masters in Pharmacy Course against the framework and an early methodology has been developed which will be further developed as the project progresses.



## Process



## Action at National and Regional levels

The software will be developed nationally and will be customised from the East Midlands NHS Workforce Deanery Skills Escalator.

The database of public health competences will be centrally developed and held

Public Health Roles will be defined centrally but regions will be able to add public health roles unique to their area.

Course data will be entered and update by individual teaching providers. Initial data entry and updating will be co-ordinated and validates at a regional level.

The target date for completion has yet to be agreed.

## Stakeholder Events

**7 June 2007**

### **Holly Lodge High School College of Science, Smethwick**

The Teaching Public Health Network Programme – Work themes for next twelve months Presented by Yvonne Thomas Public Health Specialist-Health Inequalities, NHS West Midlands Eileen Kibbler Head of Public Health Workforce, Sandwell PCT Maria Tighe Senior Lecturer; Public Health, University of Worcester The Future Public Health Workforce – What will it look like? Jenny Wright, Public Health Resource Unit Teaching Public Health Networks England and opportunities for group work

**19 October 2007**

### **Coventry University**

Forty delegates from Local authorities, Primary Care Trusts, Higher Education Institutions and Regional Bodies such as the Government Office West Midlands, Learning and Skills Council and NHS West Midlands took part in an interactive session with Bryony Lamb, Centre for the advancement of Inter-professional Education (CAIPE). Stakeholders agreed there is a need to systematise the use inter-professional learning as a teaching delivery mode. After lunch there was an opportunity to select a workshop from a range of public health themes and input to developing public health teaching projects. The final session described how the Public Health Career Framework has been applied in two regional pilots

1. identify competency gaps in the current wider public health workforce\*
2. map the public health content of university courses delivered to the future wider public health workforce\*

(\*defined as those staff where public health is not the main focus of their role but where there is a significant opportunity to bring about health improvement and reduce health inequalities through their work in the community)

**17 April 2008**

### **Shrewsbury Hospital Conference Centre**

The event was opened by Marilena Korkodilos, Public Health Workforce and Capacity, Department of Health and Jenny Wright, Director, Public Health Resource Unit who gave a national view on Teaching Public Health Networks in meeting the needs of Teaching Providers, Service Providers, Students and Commissioners in developing the Future Public Health Workforce. How well are we doing? They also provided an update on National Public Health Induction Module

Application of the Public Health Career and Skills Framework to develop a public health training needs assessment tool was described outlining why certain public health themes been selected, the importance of inter-professional learning and a taste of the work of the six pilots.

The first session after lunch introduced the concept of a public health skills escalator and how this was to be implemented nationally but available locally. The event ended with a presentation providing examples of work placement for school children and the current range of opportunities for school children to make informed study and career decisions. It was highlighted that there were significant opportunities for organisations with a public health role to engage youngsters by providing meaningful work experience in public health.

## Action Plan 2008-2011

To raise the profile of the Teaching Public Health Network as

- a vehicle for improving access to public health careers through increased capacity, consistent high quality and the integration of public health teaching into a widening range of curricula
- a route to funding coordinated and collaborative research which informs the development of public health teaching
- promoter of healthy universities and colleges

To identify in liaison with national experts such as IDeA, Skills for Health and the Public Health Resource Unit, the competence and knowledge required by the wider public health workforce in local authorities, the NHS and the independent sector that has a role to play in the health improvement of its population through policy development, strategic planning and service delivery.

To have a Public Health Teaching Commissioning Framework for course development and quality assurance by all PCTs, public health partners and public health teaching providers in the West Midlands using the Public Health Career and Skills Framework as the common language of commissioning.

To develop the role of the Teaching Public Health Network in the process of commissioning Public Health Teaching.

Areas for specification and agreement include:

- Coordinating regional assessment of training needs
- Collaborative commissioning of Continuing Professional Development at the 3 levels of the Public Health Workforce
- Coordinating the maintenance and development of local teaching provider information to be available on the National Skills Escalator on-line tool

To establish a *Credit Accumulation and Transfer System* between HEIs and FEIs across the West Midlands which:-

- addresses the public health skills and career needs of new recruits and staff at all levels of the public health workforce
- provides ready access to training appropriate to the needs of workforce development leads in the NHS, Local Authorities and the Independent Sector

To apply inter-professional learning to all WMTPHN programmes and be a key player in the development of national standards for inter-professional learning in public health

To support the Department of Health West Midlands in its implementation of the Health and Well Being Strategy and the NHS West Midlands Investing for Health through development of public health teaching capacity, designed to deliver the future public health workforce we need.

To mainstream the West Midlands Teaching Public Health Network Programme and secure agreement for future core funding.

## **Appendix 1 Patrons of the West Midlands Teaching Public Health Network**

Professor Sir Ian Kennedy, Chairman, Healthcare Commission;

Dame Yve Buckland, Chair, Consumer Council for Water;

Mr. Paul Lincoln, Chief Executive, National Heart Forum;

John Charlton, Honorary Alderman; Birmingham City Council

Professor Sir Geoff Hampton, Pro Vice-Chancellor Education Partnerships,  
Midlands Leadership Centre

## Appendix 2 Membership of the executive group

John Middleton	Regional Teaching Public Health Network Lead
Cathleen Manancourt	Regional Teaching Public Health Network Manager
Maria Tighe	University of Worcester
Colin Thunhurst	University of Coventry
Yvonne Thomas	NHS West Midlands, Public Health
Sarah Stewart-Brown	Warwick University
Anthony Stewart	Staffordshire University
Jonathan Shapiro	University of Birmingham
Karen Saunders	Department of Health West Midlands
Michael Parkes	Independent Consultant
Babarunde Olowokure	Health Protection Agency West Midlands
Aldo Mussi	Birmingham City University
Michael Murray	Keele University
Elaine McGladdery	West Midlands Local Government Agency
Eileen Kibbler	Sandwell PCT
John Kemm	West Midlands Public Health Observatory
Linda Jones	Open University (interim)
Liz Davies-Ward	Life Long Learning
Jonathan Cunningham	Learning and Skills Council
Rob Cooper	NHS West Midlands Workforce Deanery
Julia Brown	Aston University
Patricia Bond	Wolverhampton University

## **Appendix 3 Membership of the wider stakeholder group**

### **Wider Stakeholder Group**

Joseph Bush	Aston University
Stephanie Egleston	Aston University
John Denley	BEN PCT
Darren Wright	Birmingham City Council Health Scrutiny Committee
Karen Crees	Birmingham City University
Anne Robbins	Birmingham City University
Simon Walker	Birmingham City University
Christine Daly	Bournville College
Jennifer Johnson	Bournville.College
Parmjit Dhaliwal	Coventry City Council
Jean Arrowsmith	Coventry City Council
Shashi Carter	Coventry City Council
Dawn Swan	Coventry City Council
Georgie Carrington	Coventry PCT
Jammi Rao	Department of Health West Midlands
Rowena Clayton	Department of Health West Midlands
Pip Maskell	Development Influences
Nick Powell	Dudley MBC
Nick Powell	Dudley.MBC
Mike Filby	Faculty of Health, University of Central England
Hillary Shaw	Harper Adams University
Huda Mohamed	Health Protection Agency
Janet Howard	Health Protection Agency

## Wider Stakeholder Group

Janet Reece	Heart of Birmingham Teaching Primary Care Trust
Anna Frankel	Heart of Birmingham tPCT
Helena Mapp	Herefordshire PCT
Louise Rathbone	Holly Lodge High School College of Science, Smethwick
Sue Cuthbert	Institute of Health, Social Care and Psychology, University of Worcester
Nicola Leighton	Keele University
Bruce Johns	Newman College
Ellen Davis	NHS Warwickshire.
Liz Hill	NHS West Midlands
Lisa Burrows	North Staffordshire PCT
Sue Dunn	North Staffordshire PCT
Anne Fletcher	Open University
Catherine Evitts-Swain	Sandwell PCT
Reeta Chaudhry	Sandwell PCT
Shawinder Basra-Dhillon	Sandwell PCT
Shaukat Ali	Sandwell PCT
Reeta Chaudry	Sandwell PCT
Caroline Horton	Sandwell PCT
Ginder Narle	Sandwell PCT
Nicki Ballard	Shropshire PCT
Clare Davies	Shropshire PCT
Karin Dawson	Shropshire PCT
Jenny Eden	Shropshire PCT
Sian Huszak	Shropshire PCT
Sara Kahrobaei	Shropshire PCT

## Wider Stakeholder Group

Mark Trenfield	Shropshire PCT
Victoria Masters	Solihull Care Trust
Alison Trout	Solihull Care Trust
Ahmed Aliko	South Staffordshire PCT
Jo Robins	South Staffordshire PCT
Sue Wardle	South Staffordshire PCT
Laura Williams	South Staffordshire PCT
Suzanne Jones	South Staffordshire Primary Care Trust
June Sampson	Staffordshire University
Rachel Goodman	Staffordshire University
Dr Maureen Wisikin	Stoke on Trent PCT
Lisa Burrows	Stoke on Trent PCT
Judy Kurth	Stoke-on-Trent PCT
Carole Renshaw	Supporting people to explore beyond the given
Allen Sara	Sutton Coldfield College
Anne Green	Sutton Coldfield College
Sabrina Thomas	Svt16@hotmail.com
Jo Robbins	Telford & Wrekin PCT
Alison Johnson	Telford and Wrekin PCT
Jane Reeves	Telford College
Carol McInnes	Telford PCT
Debbie Evans	University of Worcester
Ian Llewellyn-Nash	University of Worcester
Jacqueline Creighton	Walsall College
Jackie Pugh	Walsall College

## **Wider Stakeholder Group**

Dr Sam Ramaiah	Walsall Teaching PCT
Joanna Robinson	Walsall tPCT
Phillip Stimpson	Walsall TPCT
Sue Gill	Walsall tPCT
John Linnane	Walsall tPCT
Penny Sadler	Walsall tPCT
Katrina Crawford	Warwickshire College
Claire Kingdom	Warwickshire College
Jane Dowsett	Warwickshire PCT
Hilary Williams	Wolverhampton City PCT
Max Kalsi	Wolverhampton PCT
Hilary Williams	Wolverhampton PCT
Stuart Bourne	Worcester PCT