



Headline Data from the NHSBSP/ABS Audit of Screen- Detected Breast Cancers 1 April 2008 to 31 March 2009



ABS at BASO Conference
York Racecourse
19 & 20 May 2010

Dr Gill Lawrence
On behalf of the NHSBSP/ABS
Audit Steering Group



Headline Data - Outline

- 2008/09 NHSBSP/ABS audit - background information
- Non-operative diagnosis of non-invasive breast cancers
- B5a (invasive) breast cancers
- Cancer Peer Review - key clinical indicators
- Waiting times
- Repeat operations
- 1 and 5-year relative survival



Management of the axilla – current UK practice -16.15-16.30pm today

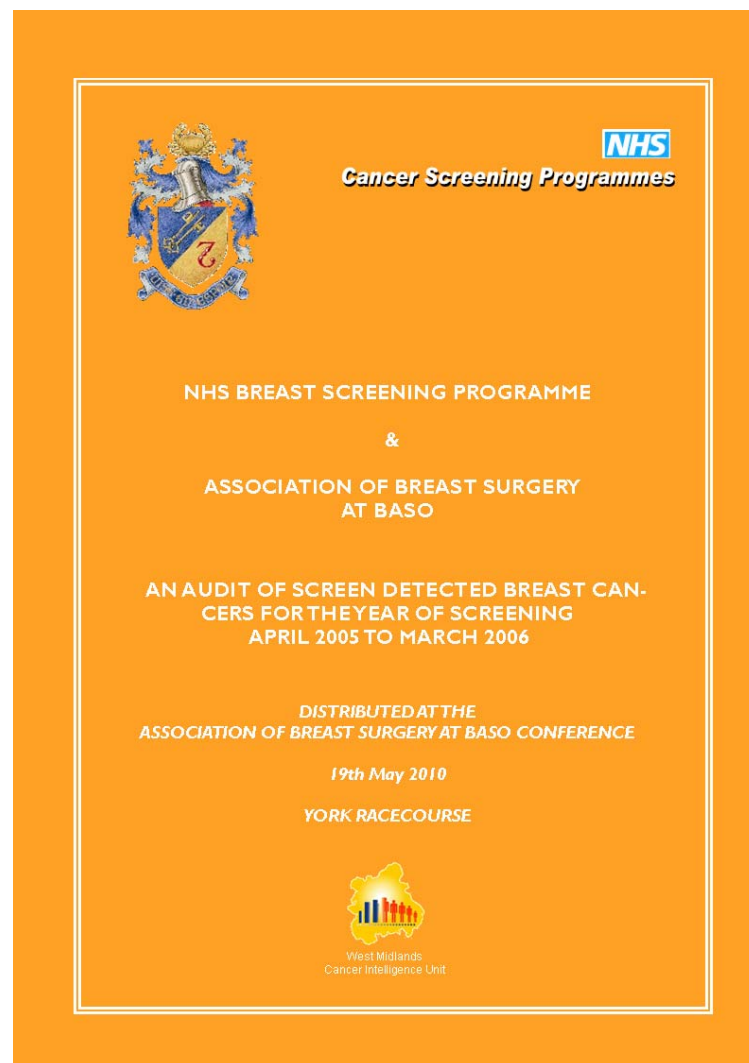
Main audit presentation - 9.00-10.30am tomorrow



NHSBSP/ABS Audit 2008/09 Background Information

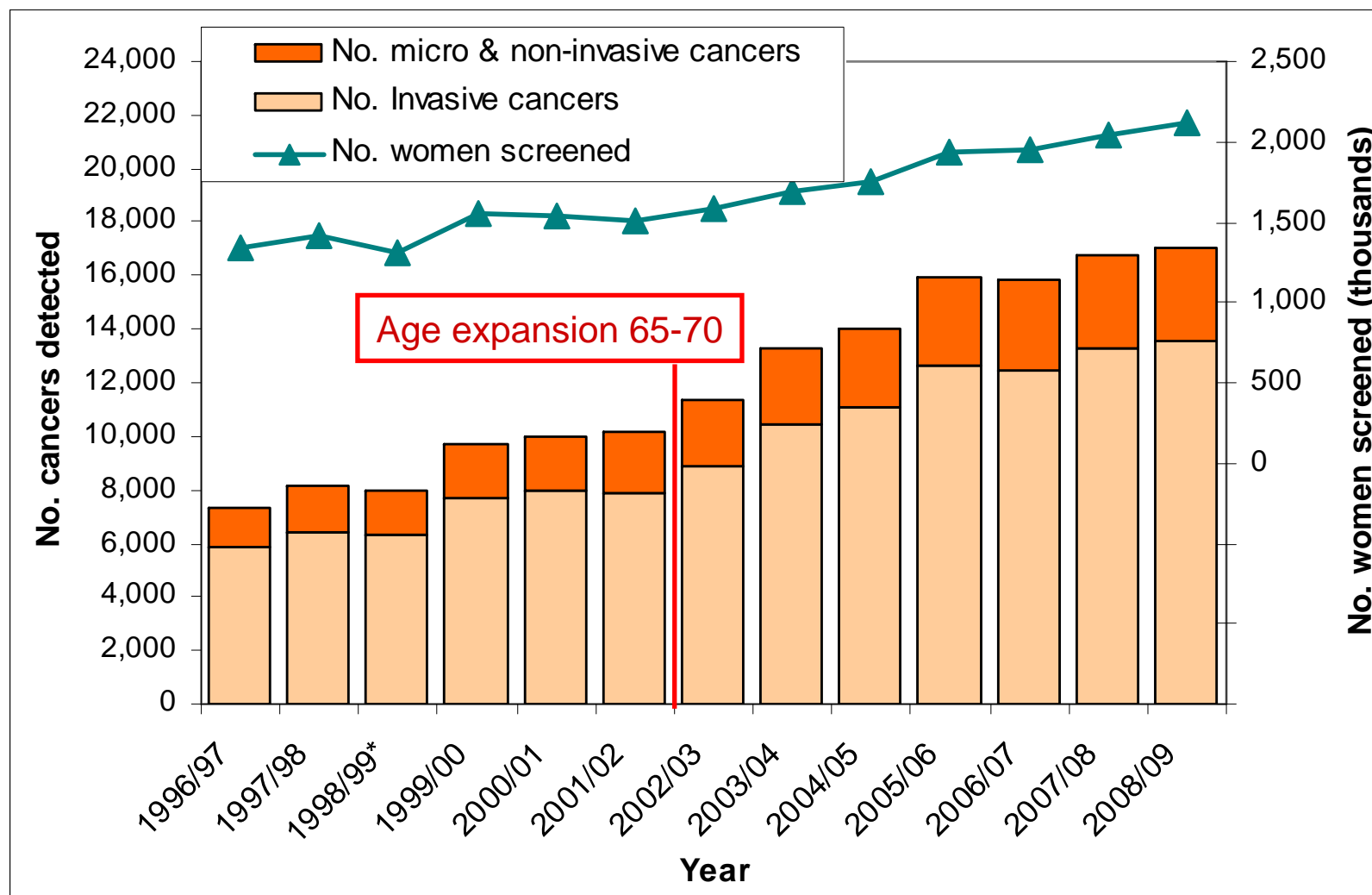


NHSBSP/ABS Audit Booklet

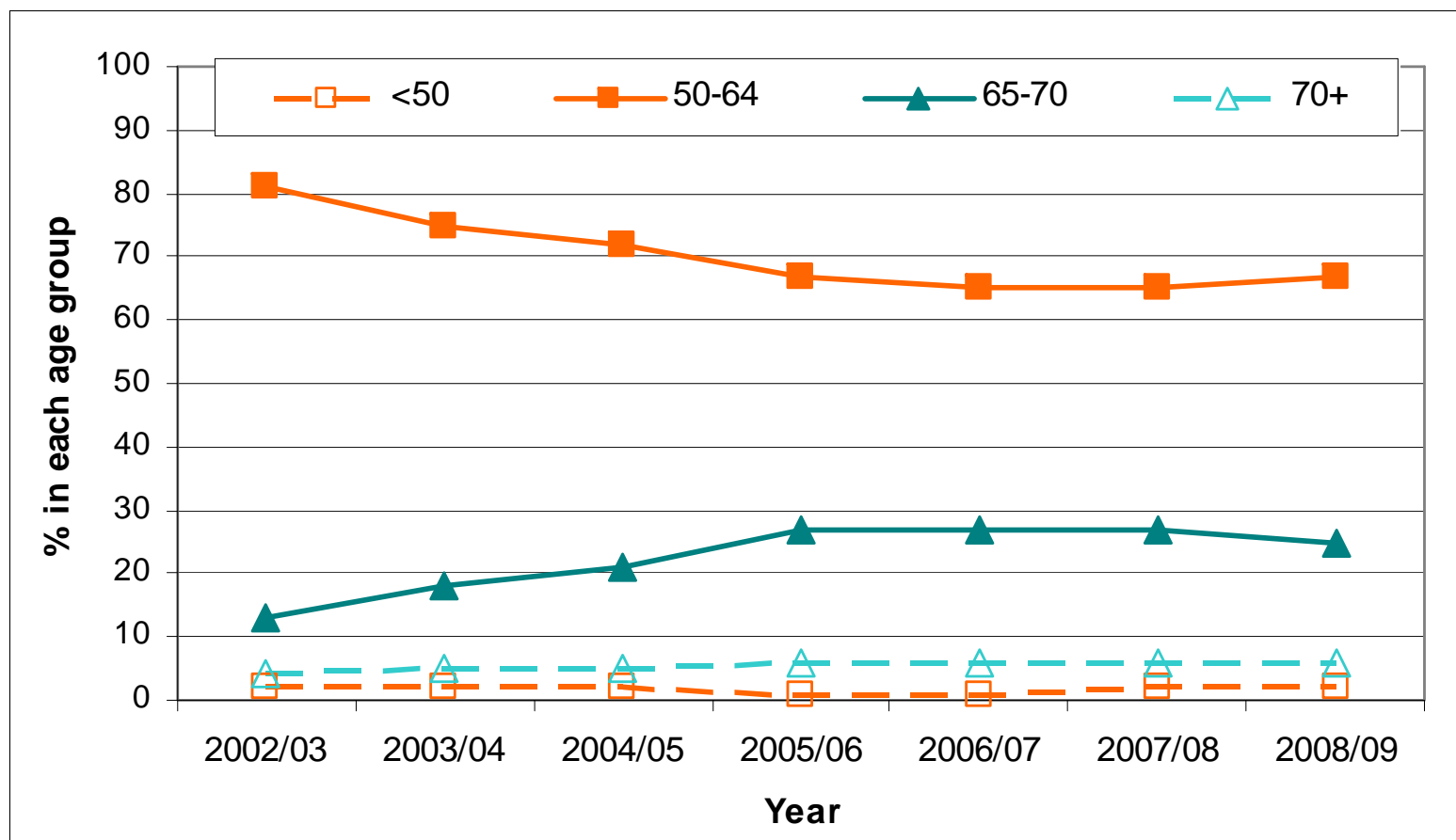


Available on www.wmpho.org.uk/wmciu/ and www.cancerscreening.nhs.uk

Cancers detected and women screened – changes over time



Age distribution of women with screen-detected cancers



The last unit in England, Wales and Scotland started the 65-70 age expansion in April 2006

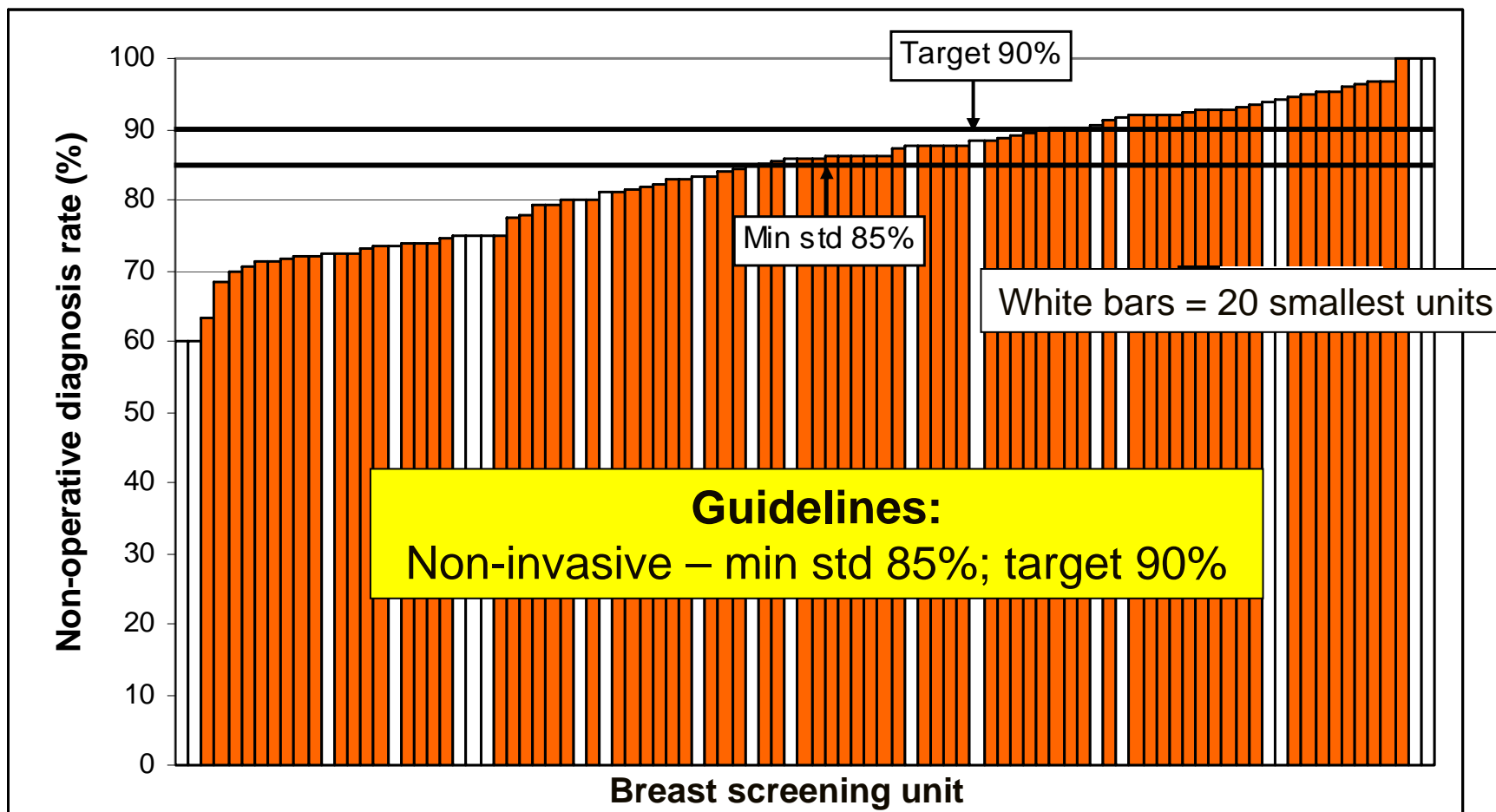
The 65-70 age expansion has not started in N Ireland



Non-operative Diagnosis of Non-invasive Breast Cancer



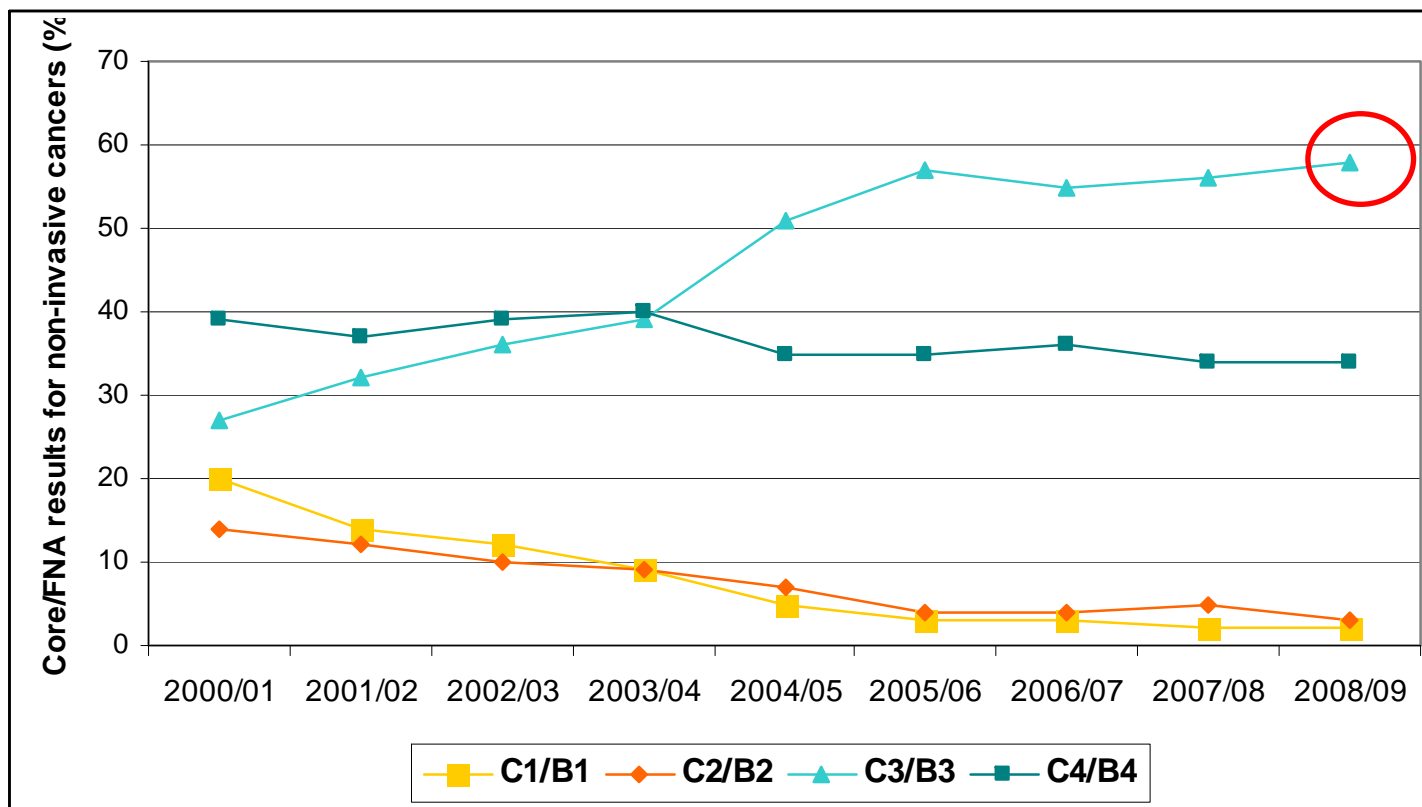
Non-operative diagnosis rates



525 non-invasive cancers did not have a non-operative diagnosis
 44 screening units (11 small) failed the 85% minimum standard
 24 screening units have failed to meet the minimum standard for 3 years



Malignant open biopsy core/FNA results



In 2008/09, 307 non-invasive cancers (58%) without a non-operative diagnosis had a B3/C3 biopsy result

Need to look at role of lobular neoplasia core biopsy results



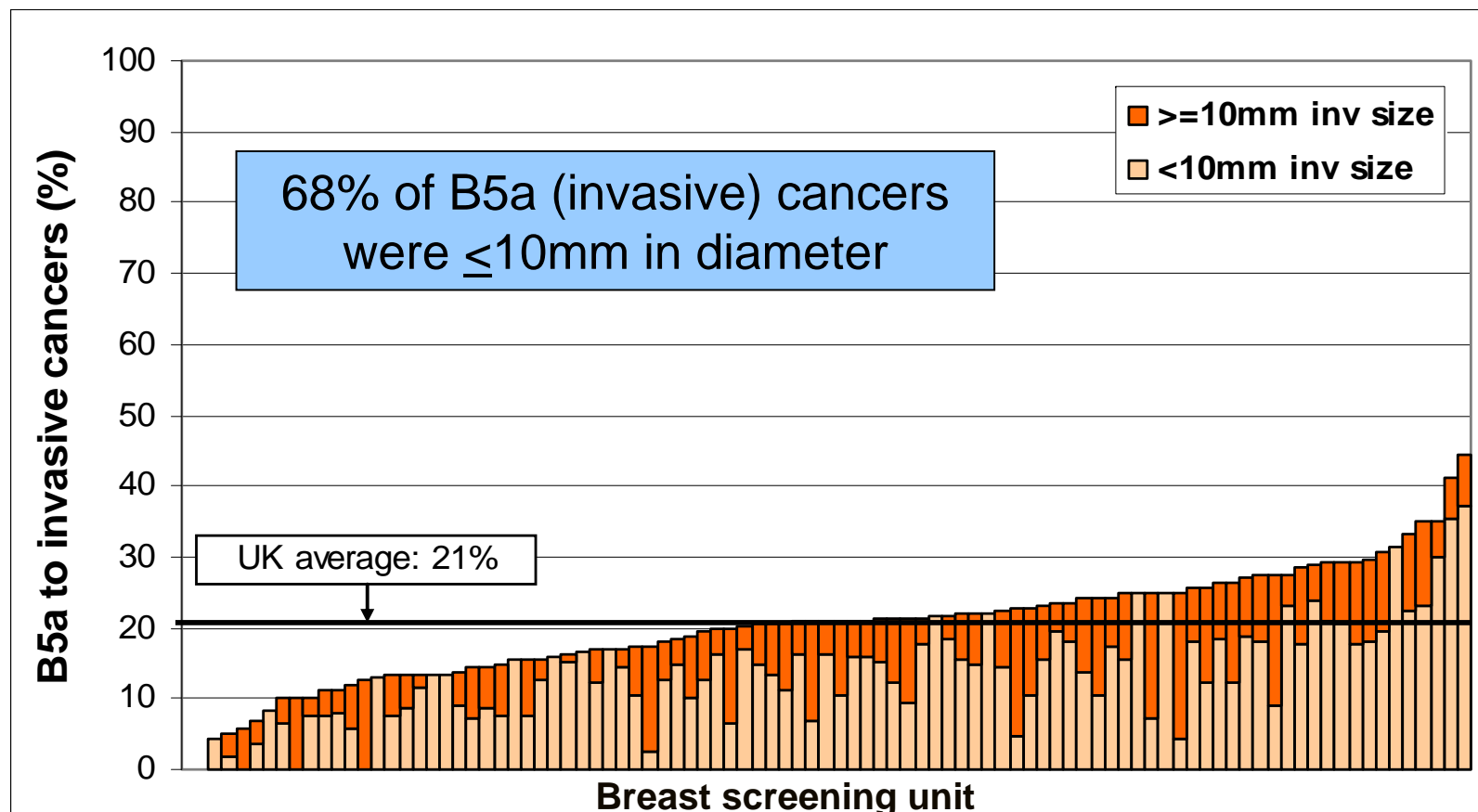


B5a (invasive) Cancers

748 diagnosed in 2008/09
5.5% of all invasive cancers



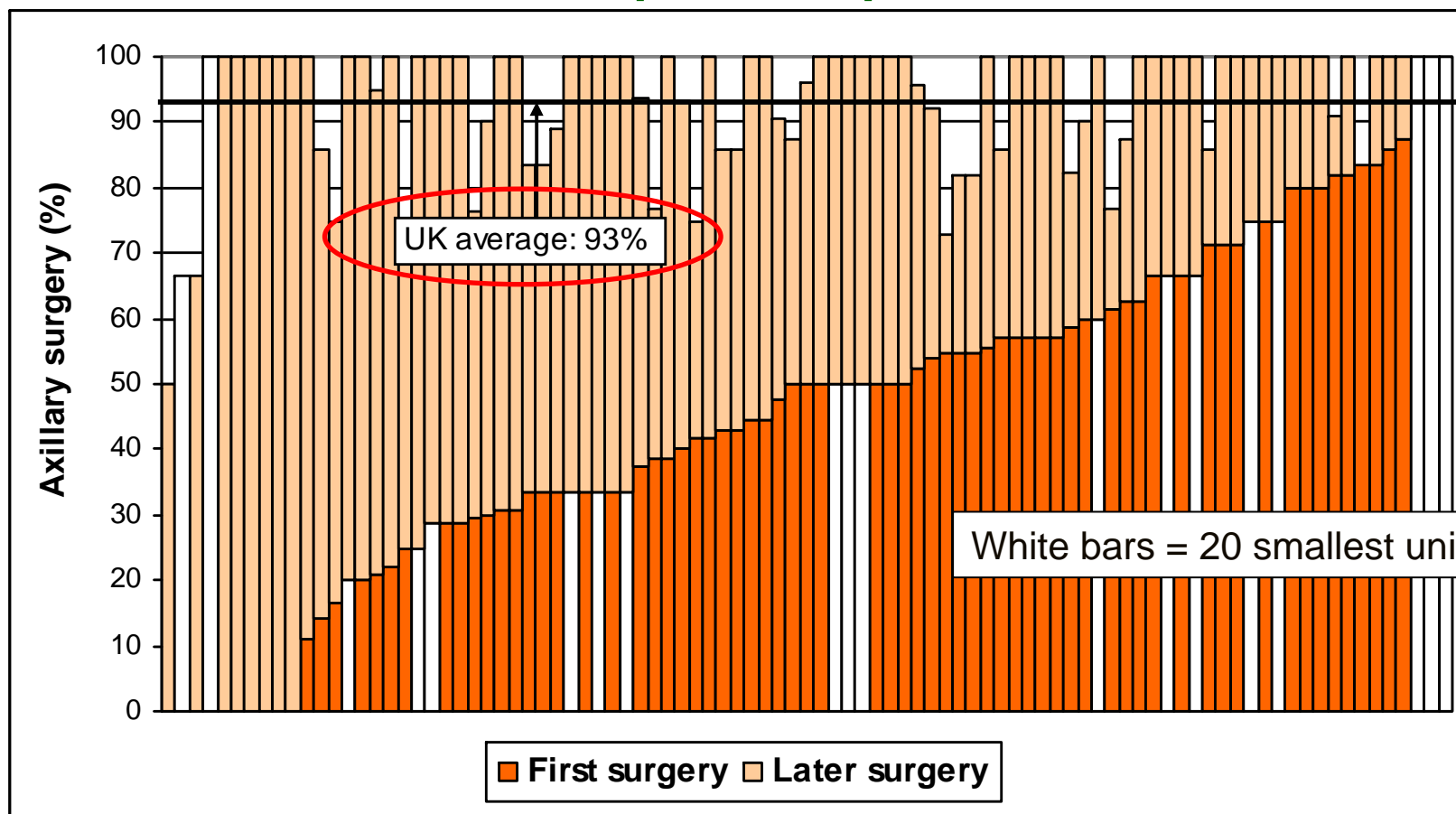
B5a (invasive) cancers: invasive tumour size



In 2008/09, of the 3,639 cancers with a B5a (non-invasive) diagnosis
 26% were not non-invasive at surgery
 21% were invasive at surgery



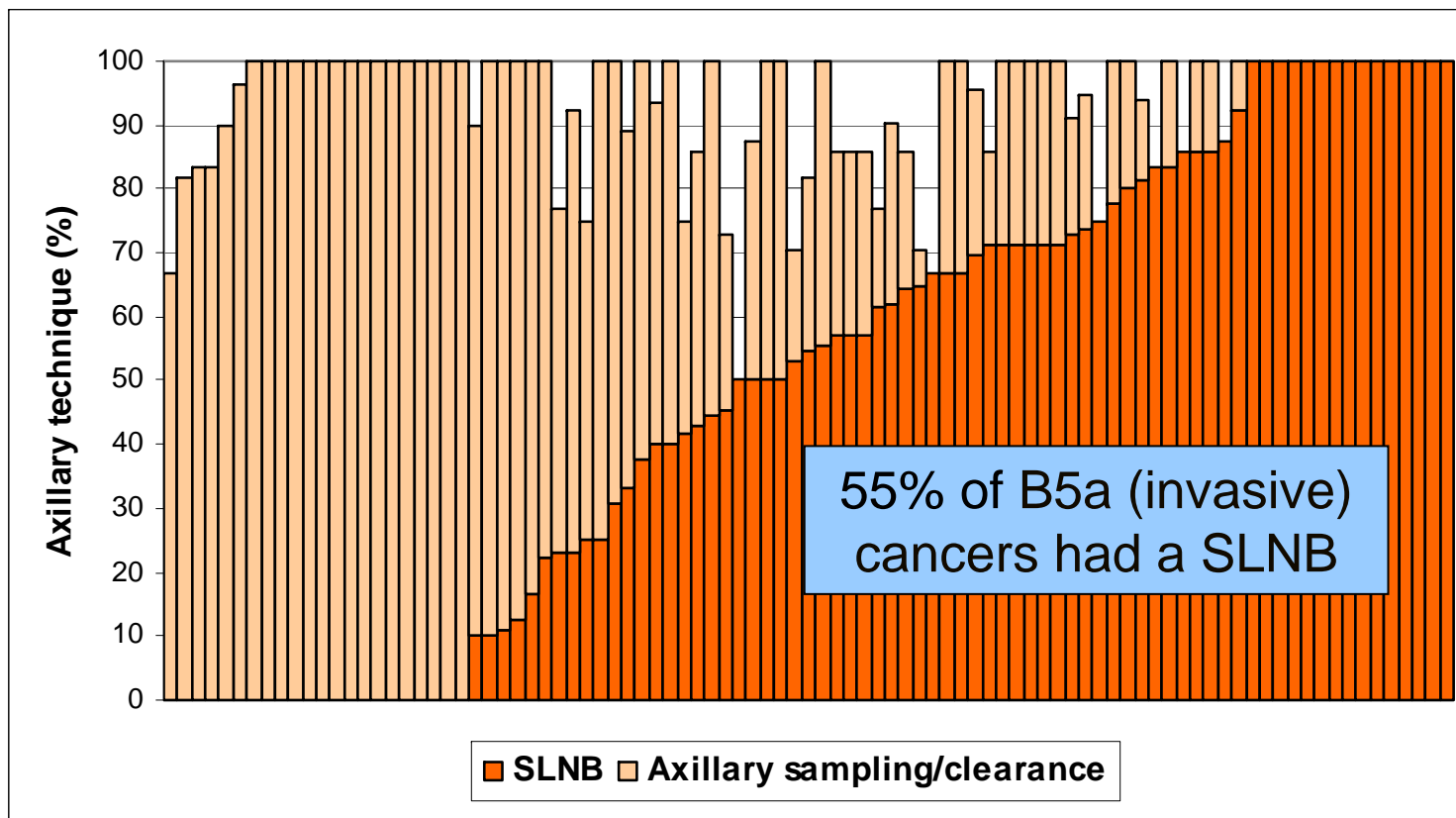
B5a (invasive) cancers: axillary surgery at first or repeat operations



47% of B5a (invasive) cancers had axillary surgery at the first operation and 46% at a repeat operation



B5a (invasive) cancers: type of nodal surgery





Cancer Peer Review Key Clinical Indicators

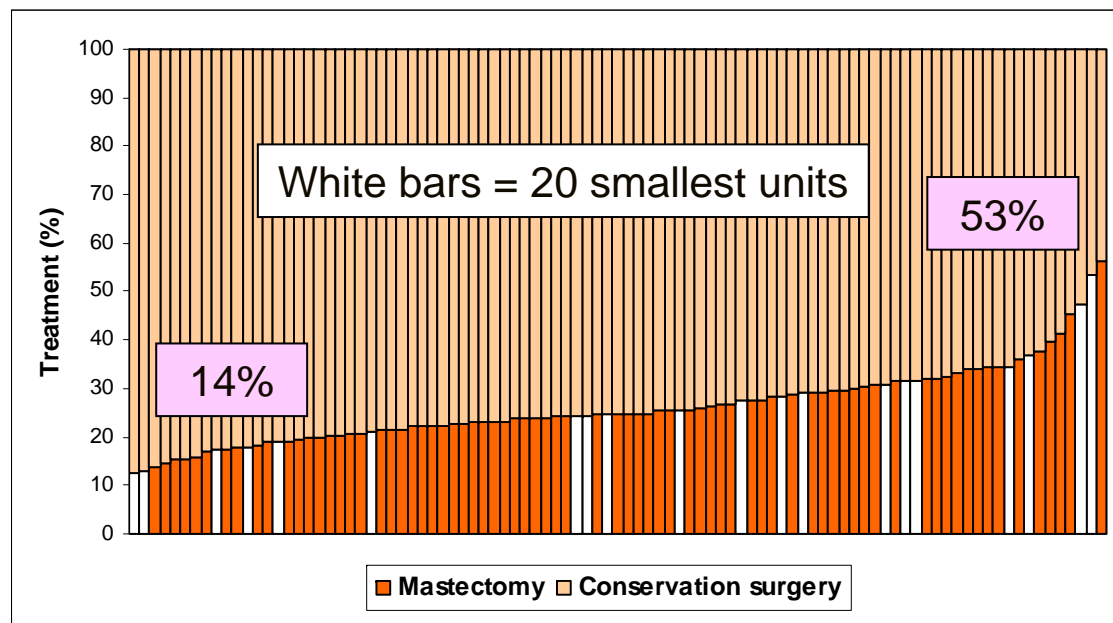
Mx:BCS ratios

Access to immediate
reconstruction

Surgical caseload

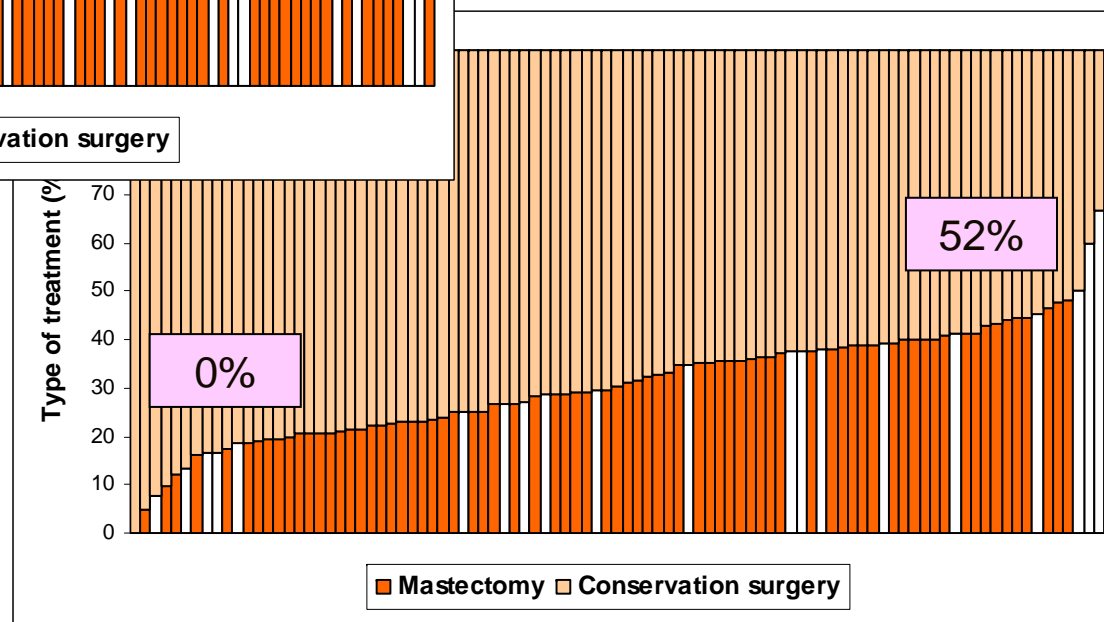


Type of surgical treatment



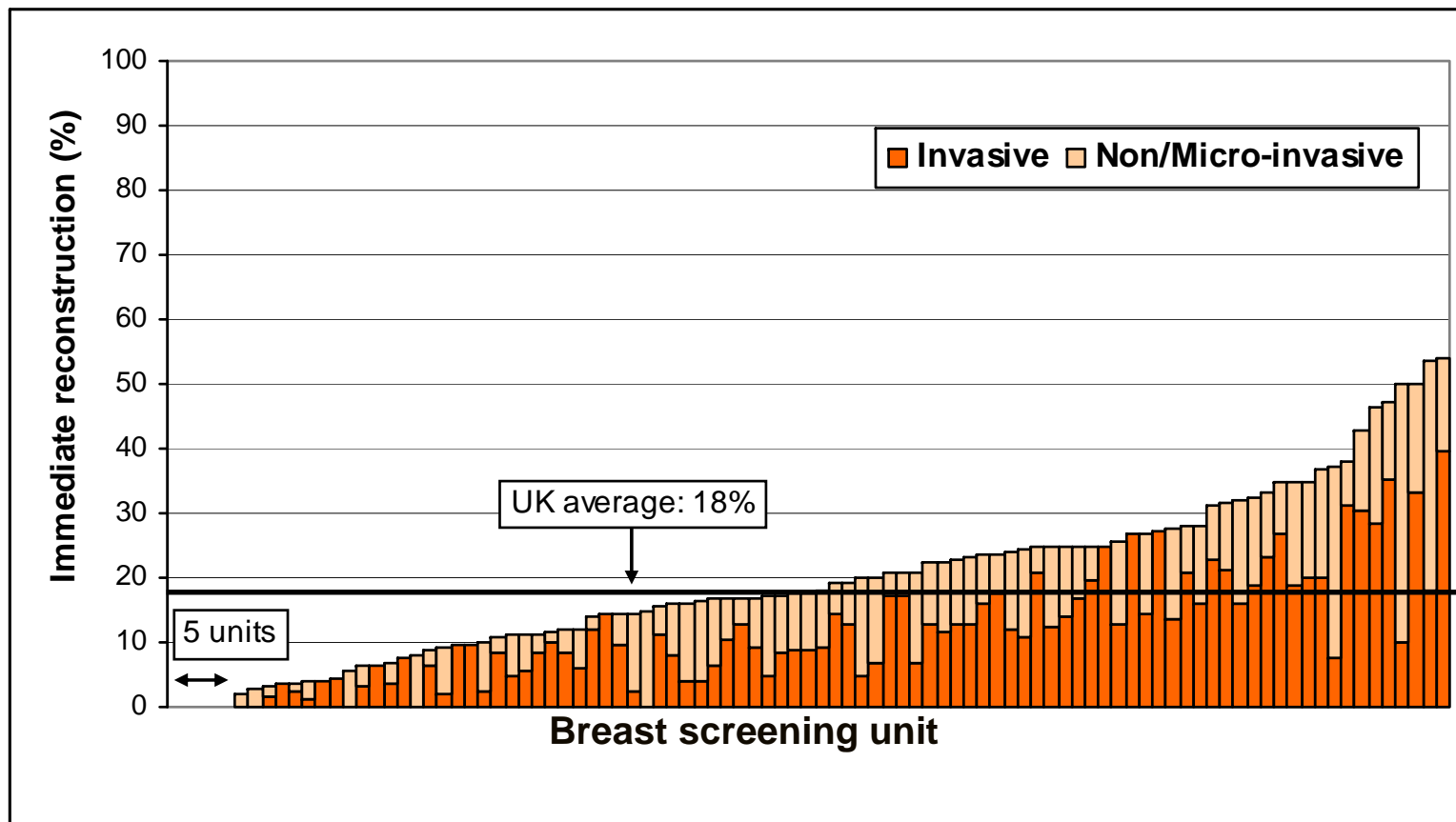
Invasive cancers
 26% Mx and 74% BCS
 Ratio Mx:BCS = 0.36:1
 Highest = 0.90:1
 Lowest = 0.16:1

Non-invasive cancers
 30% Mx and 70% BCS
 Ratio Mx:BCS = 0.44:1
 Highest = 0.93:1
 Lowest = 0:1



Immediate reconstruction

Guidelines: Patients should have access to immediate reconstruction

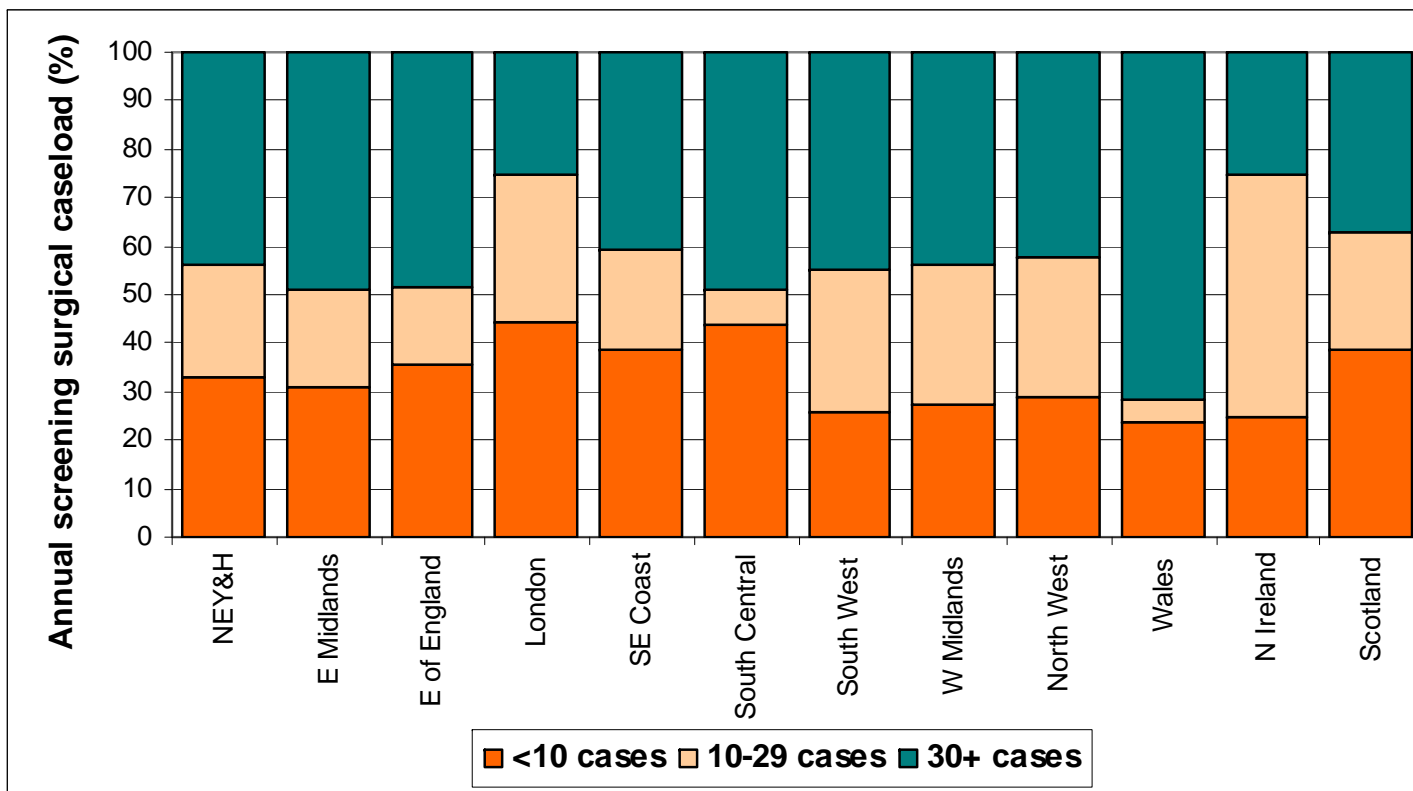


14% of invasive cancers and 32% on non-invasive cancers treated with Mx had immediate reconstruction
National Mastectomy & Breast Reconstruction Audit = 17% and 38%



Surgical caseload

Guidelines: Surgeons should have an annual surgical caseload of 30+



Of the 149 surgeons with a screening caseload of <10 cases:
 55 had 30+ symptomatic cases
 20 joined/left NHSBSP in 2008/09
 14 were in private practice (12 in London)





Waiting Times

31 days

62 days

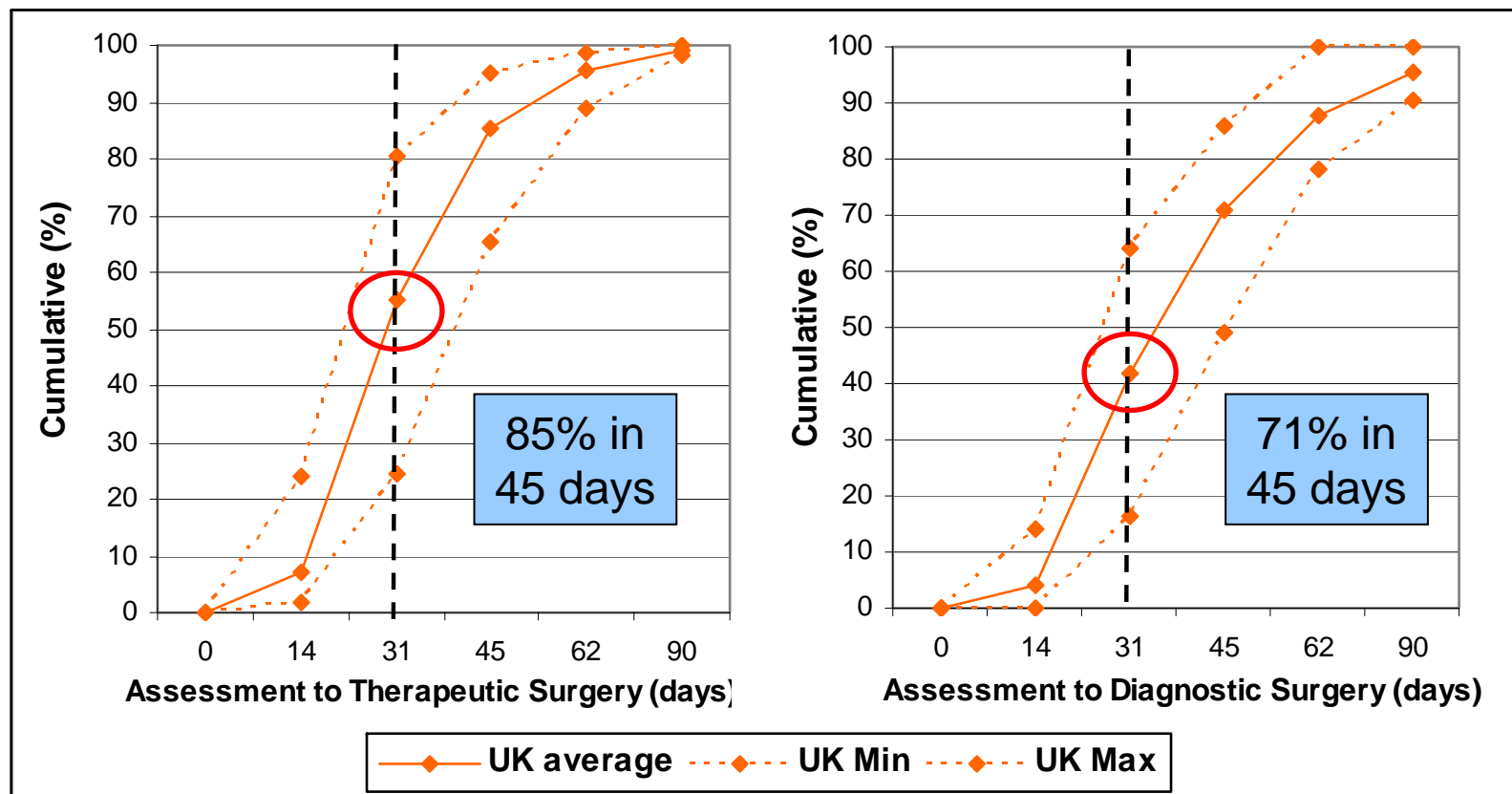


Waiting times standards

- From **1 January 2009**, screening cases have been included in Cancer Waiting Times monitoring
- **31 days** from 'decision to treat date' to 'date of first treatment' = **96% standard**
 - Look at 45 days from assessment to first surgery
 - Assumes no longer than 14 days between first assessment clinic and results clinic
- **62 days** from 'date of referral' to 'date of first treatment' = **90% standard**
 - 'Date of referral' will be 'date of last read'
 - 'Date of last read' will lie somewhere between
 - 'date of first screen'
 - 'date of first assessment'
 - Look at time to first diagnostic or therapeutic surgery



Time from assessment to first surgery (excluding neo-adjuvant therapy cases)



Proportion of women having surgery within 31 days of assessment:
 55% with a non-operative diagnosis (median time 29 days)
 42% without a non-operative diagnosis (median time 35 days)

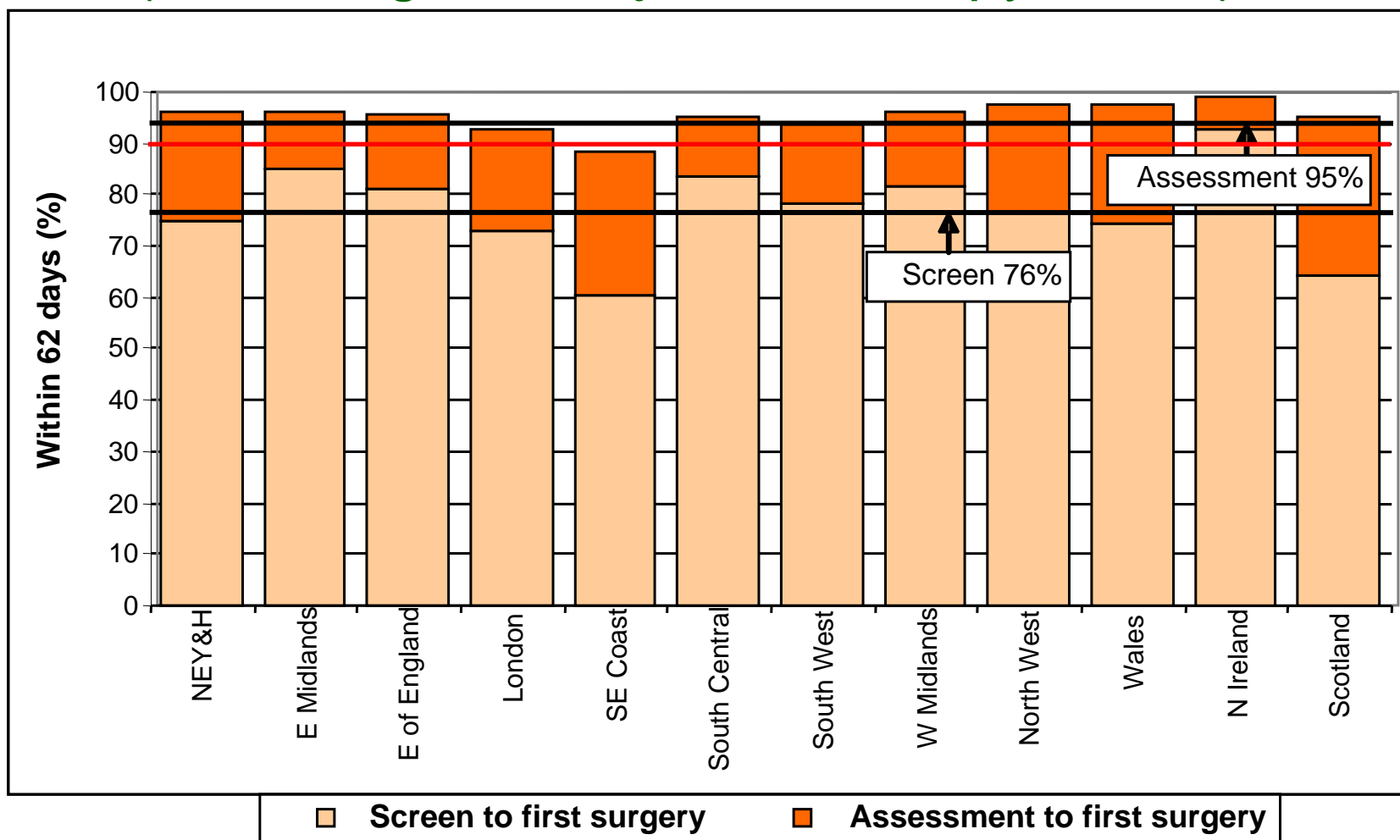


‘Delayed diagnosis’ cancers time from assessment to first surgery greater than 45 days

Type of cancer	With non-operative diagnosis		Without non-operative diagnosis		Overall distribution
	No.	%	No.	%	
All cases	2,302	15	233	29	%
Invasive	1,605	70	75	32	79
Non-invasive	669	29	153	64	20
Micro-invasive	26	1	4	2	2



Time from referral to first surgery (excluding neo-adjuvant therapy cases)



Only N Ireland and ?E Midlands could meet the 90% 62 day standard

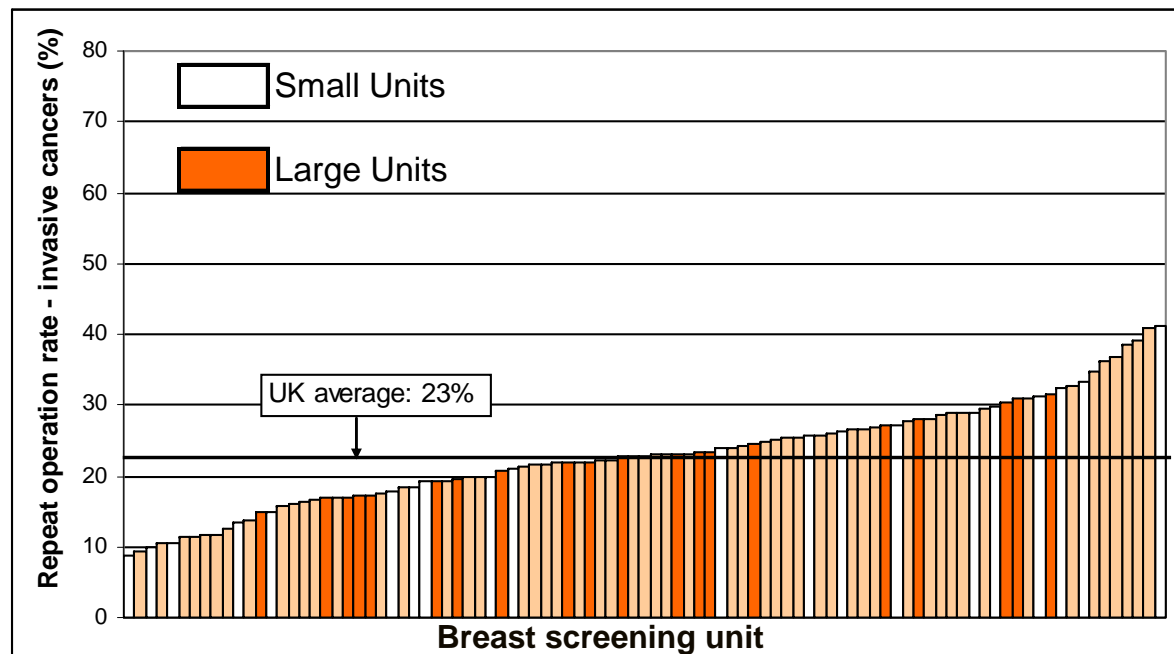




Repeat Operations



Repeat operation rates



Invasive cancers
All cancers = 23%

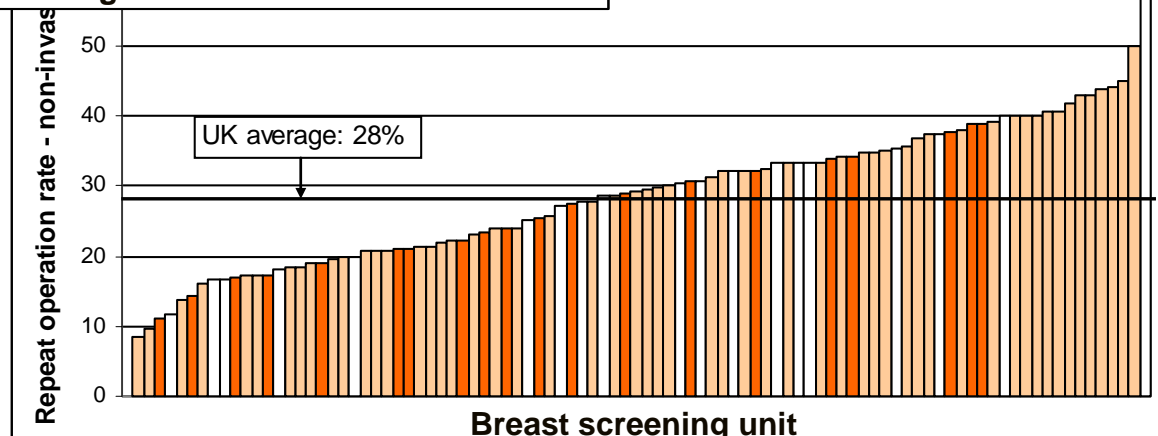
Non-op diagnosis = 22%
Non-op/BCS = 25%

No non-op = 80%

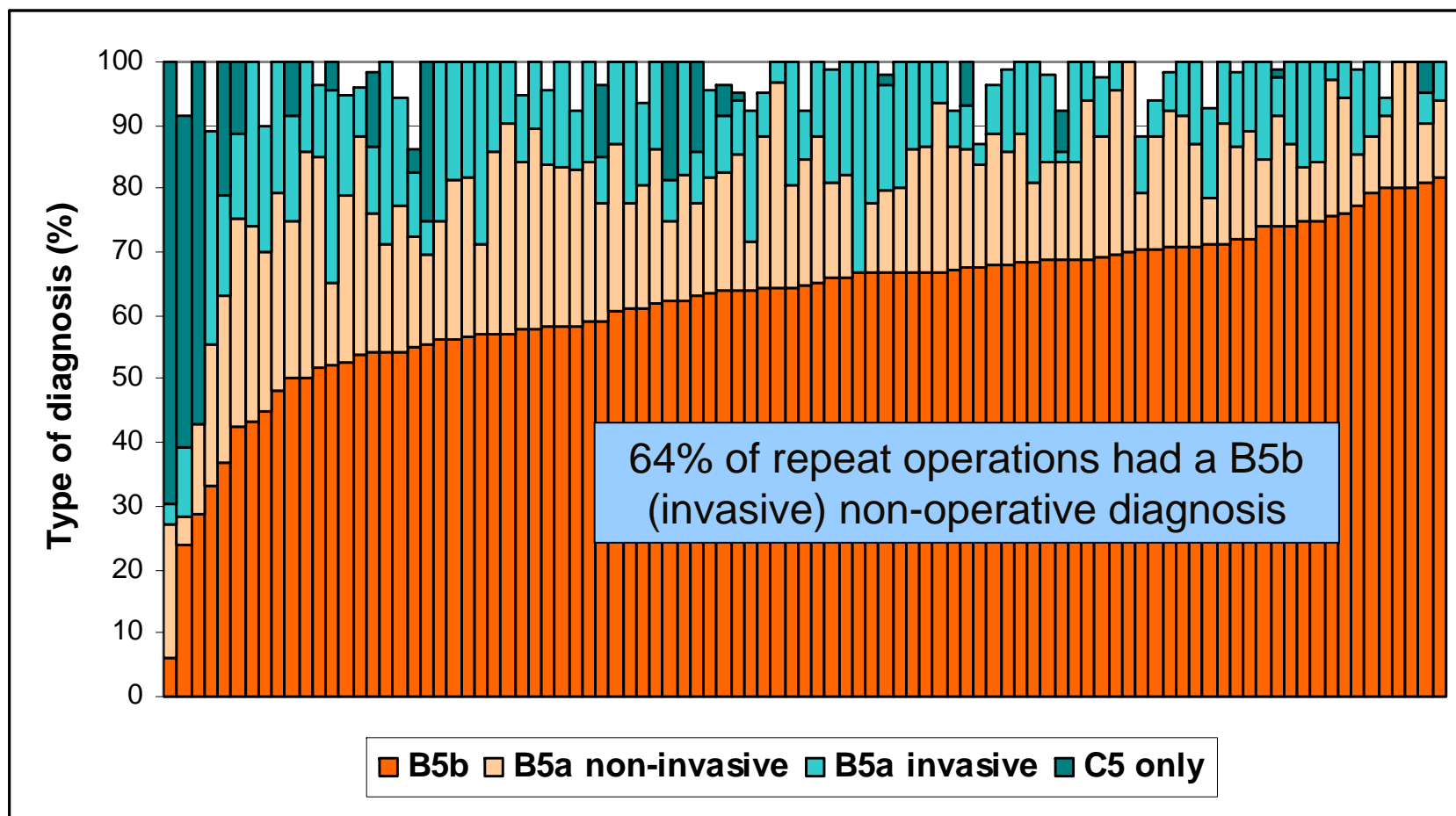
Non-invasive cancers
All cancers = 28%

Non-op diagnosis = 25%
Non-op/BCS = 31%

No non-op = 44%



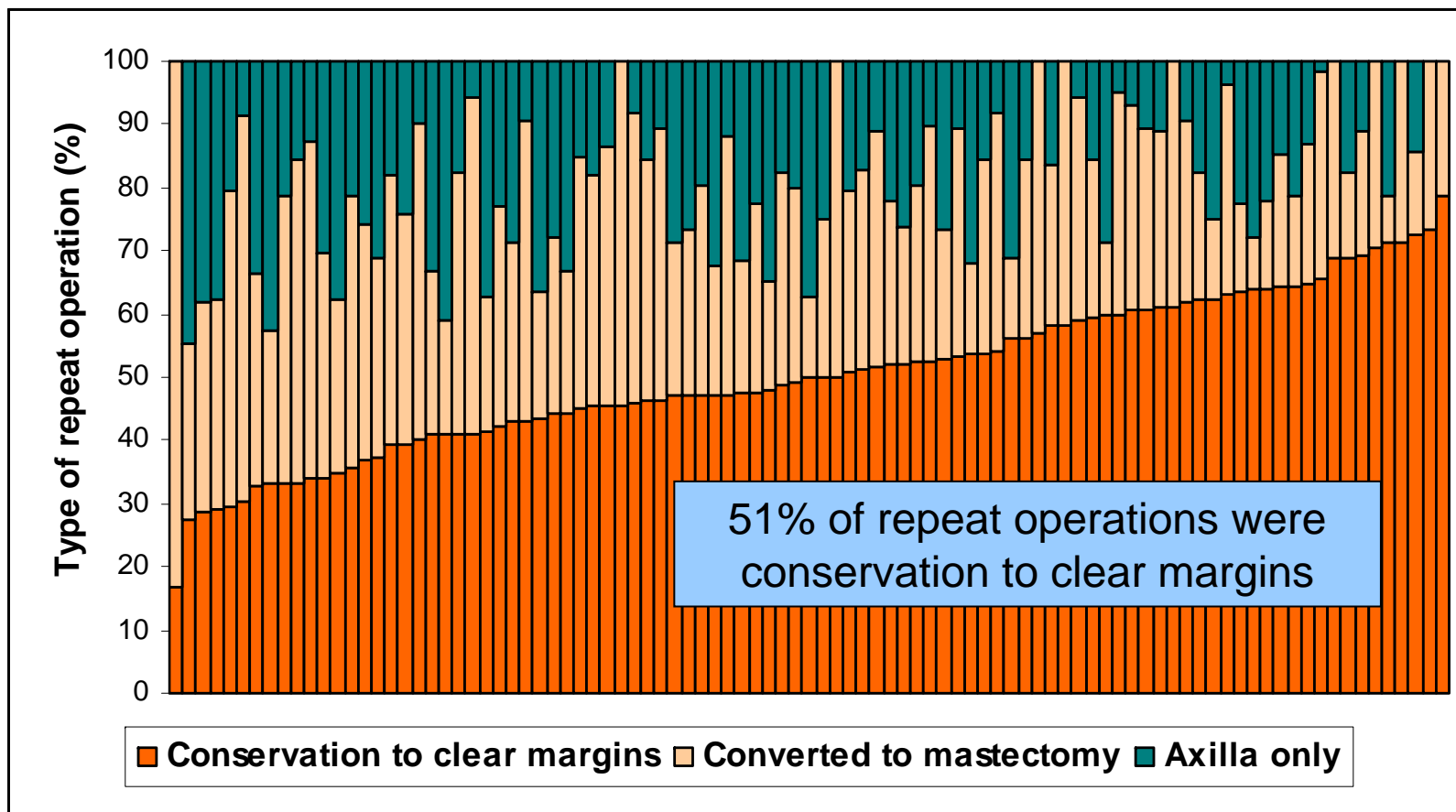
Type of non-operative diagnosis for cases with a repeat operation



19% = B5a (non-invasive), 12% = B5a (invasive), 3% = C5 only



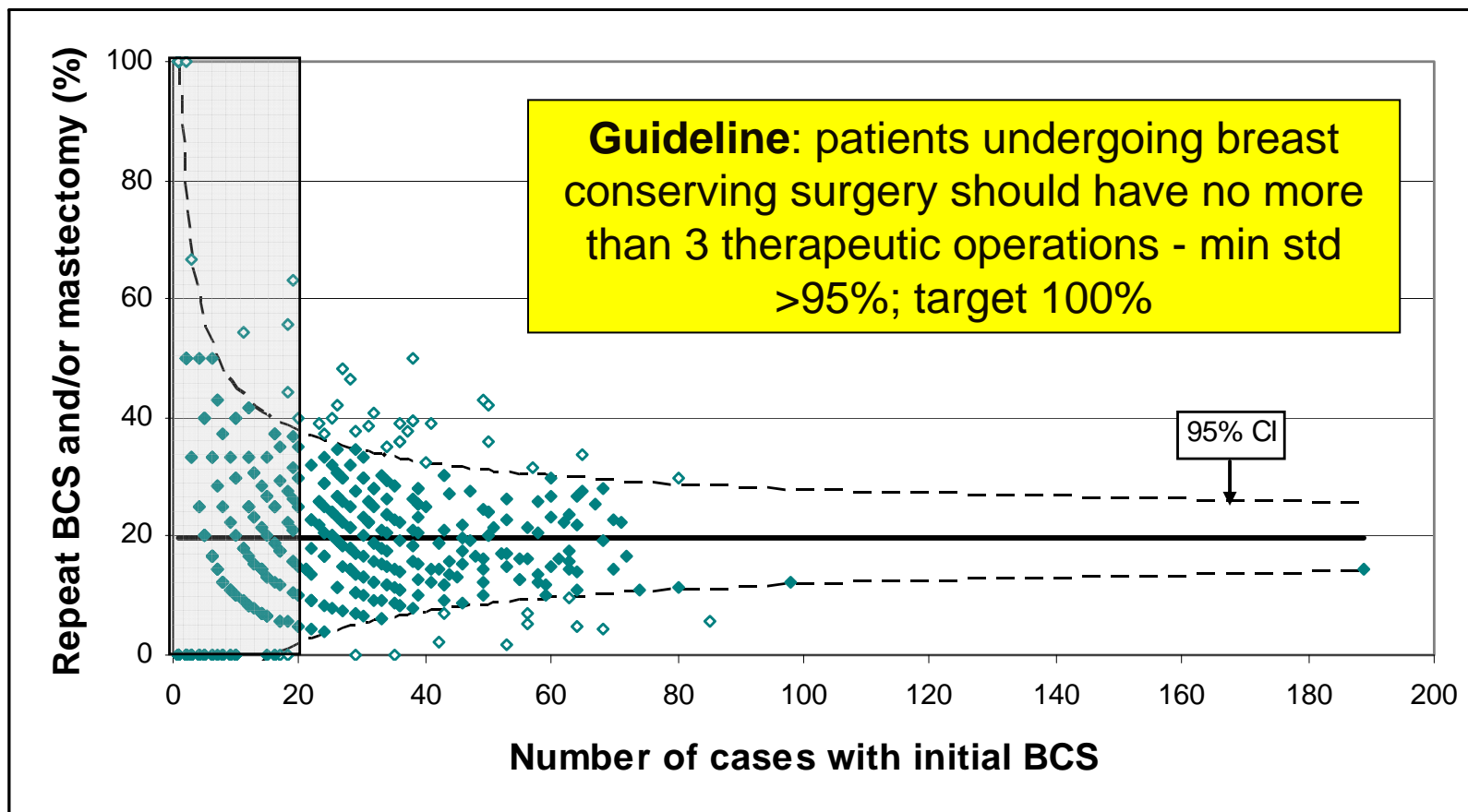
Repeat operations for cases with initial BCS (cases with and without non-op diagnosis)



30% = BCS converted to Mx, 19% = operations to the axilla only



Repeat operations after BCS - surgical variation



257 surgeons had more than 20 cases with BCS as the first operation
 25 surgeons lie above and 11 below the control limits
56 surgeons did 3+ therapeutic operations

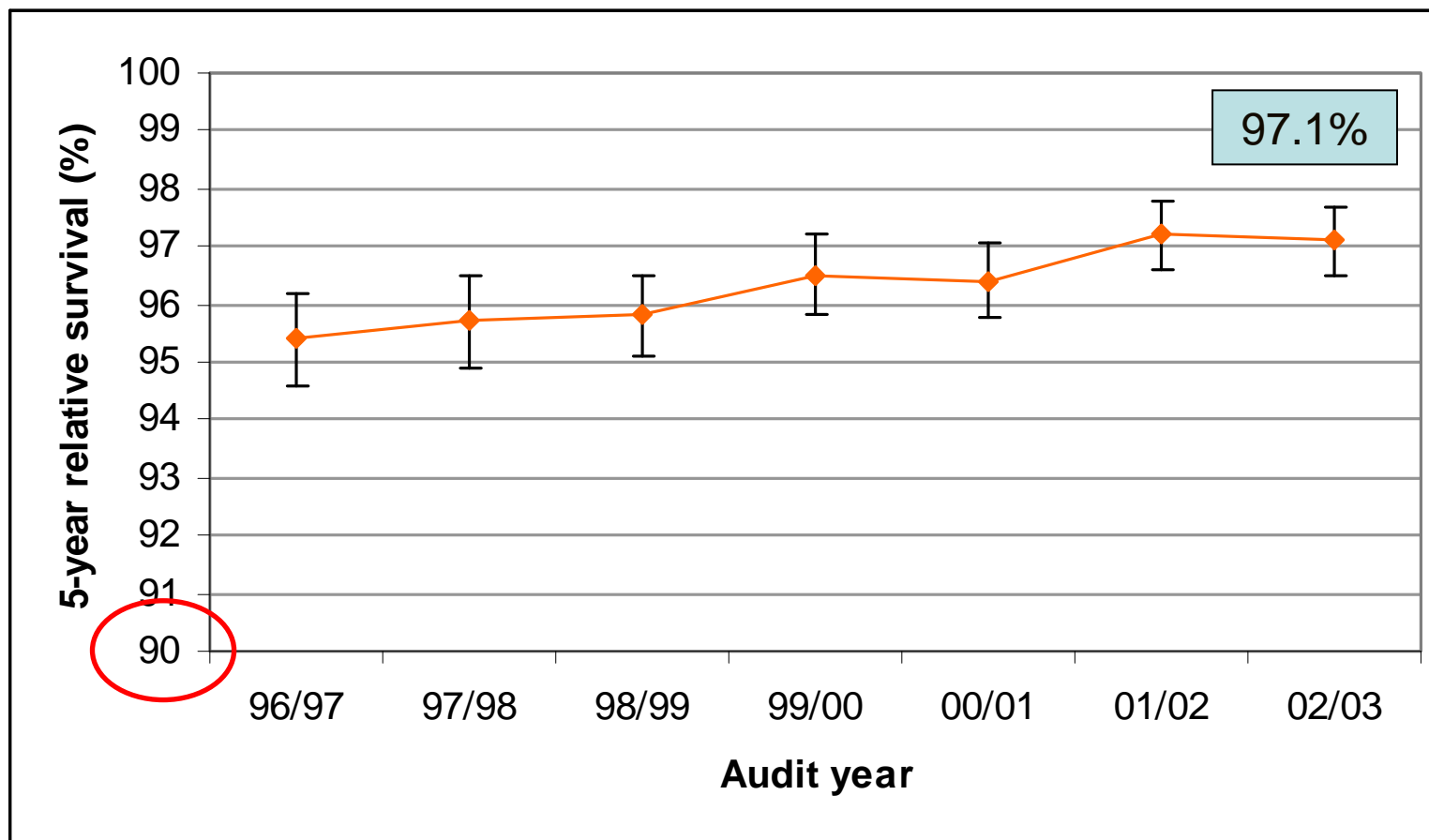




1-year and 5-year Relative Survival NPI Deprivation Presentation route



5-year relative survival

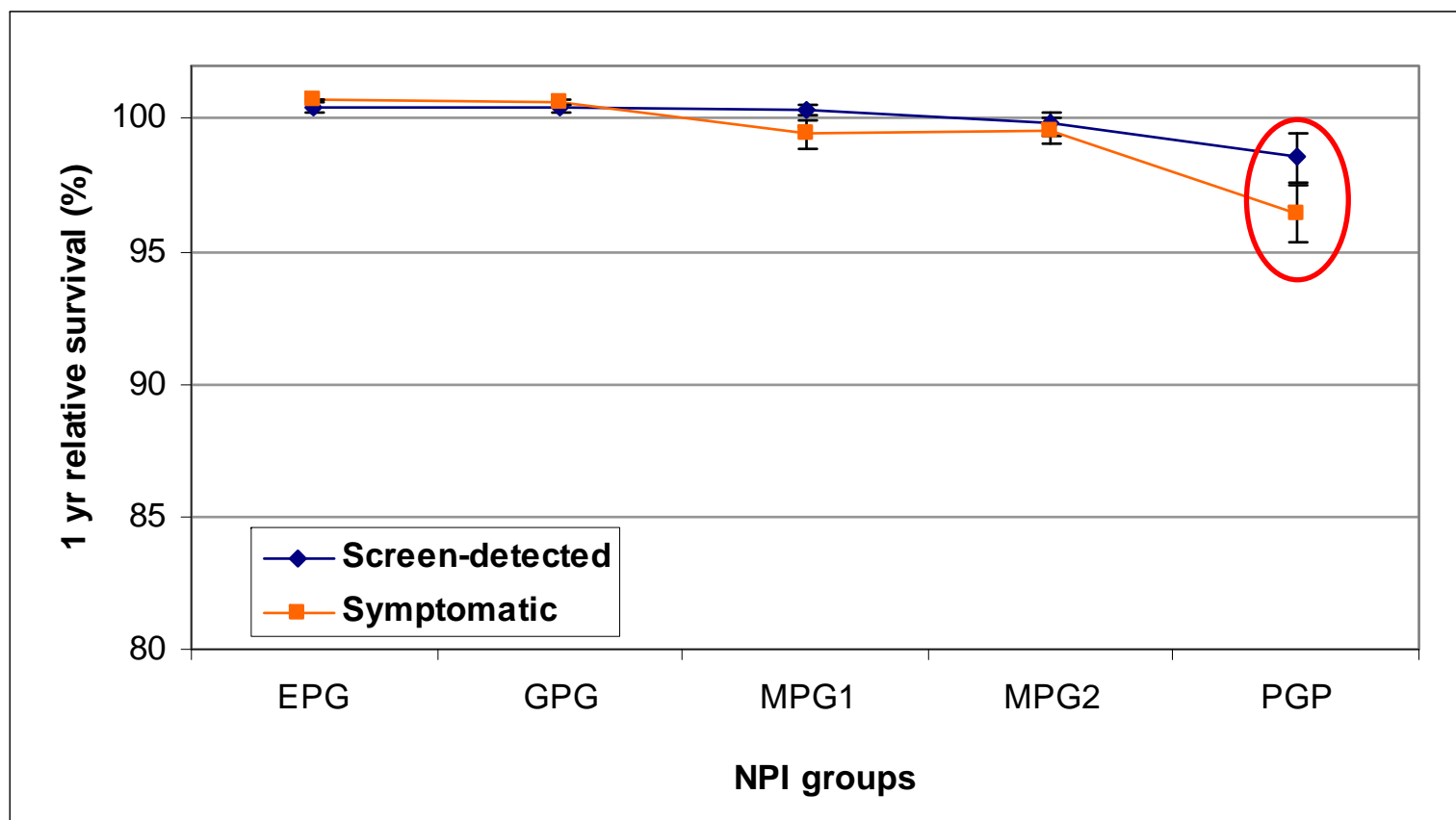


Patients with invasive screen-detected breast cancer

5-year relative survival for patients with non-invasive or micro-invasive breast cancers is 101%



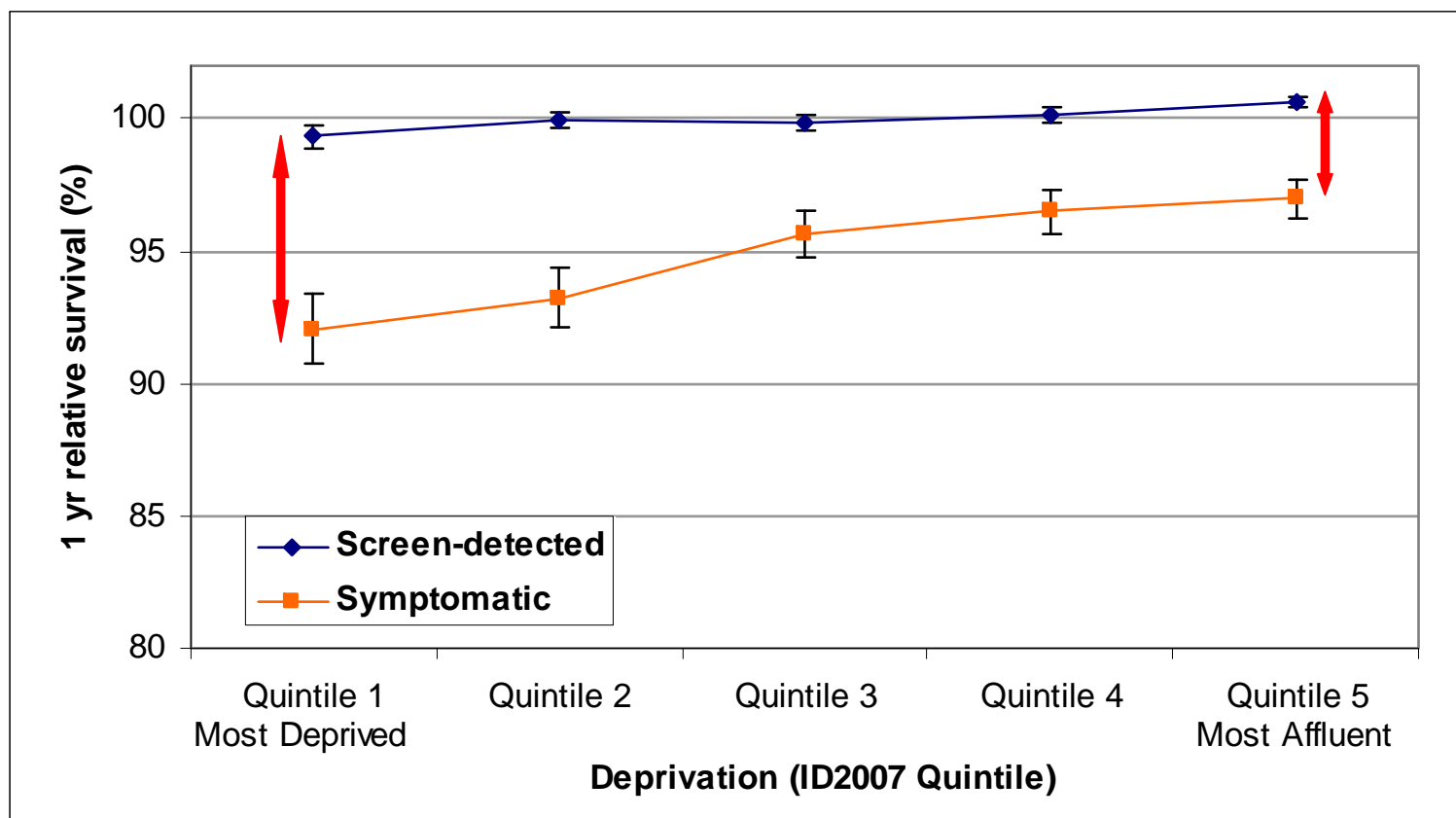
Variation in 1-year relative survival with NPI group



Patients aged 50-70 years
 Diagnosed with invasive breast cancer in 2006 in England



Variation in 1-year relative survival with deprivation



Patients aged 50-70 years
 Diagnosed with invasive breast cancer in 2006 in England



WMCIU
Olive Kearins

NHSBSP/ABS
Shan Cheung
Nicola Greenway

BCCOM
Catherine Lagord
Jasmin Sidhu
Colin Sagar

Thankyou



Breast Screening QARCs
Screening Units
BCCOM Steering Group
Cancer Registries
Breast Surgeons

