



Results from 2 years of the BCCOM project; comparison of outcome data for screen-detected and symptomatic breast cancers

UKACR Annual Conference, Amsterdam

19 October 2006

Catherine Lagord on behalf of BCCOM Steering Group

Tel: 0121 415 8129 Fax: 0121 414 7712

E-mail: gill.lawrence@wmciu.nhs.uk

E-mail: catherine.lagord@wmciu.nhs.uk



BCCOM Year 2: Audit Flow



ABS at BASO symptomatic representatives	<p>Contact lead breast surgeons in their region</p> <p>Encourage all consultant breast surgeons to sign the consent form (for cancer registry to release data)</p>
Local cancer registry	Identify primary breast cancers diagnosed in 2003
	Exclude screen-detected breast cancers
	Assign a consultant breast surgeon
	Check surgeon has signed the consent form
	Send 'surgeon level' data to lead surgeon of treating hospital
Lead surgeon	<p>Allocate cases to relevant consultant surgeon</p> <p>Request surgeons to check, amend and sign off data</p> <p>Send signed-off data to local cancer registry</p>
Local cancer registry	Send data signed by surgeons to WMCIU
WMCIU/ BCCOM steering group	Collect and analyse results



Number of cases included in BCCOM



Cancer Registry	BCCOM Year 1	BCCOM Year 2	TOTAL
East Anglia	1,691	997	2,688
MCCR	595	306	901
North Western	496	218	714
Northern Ireland	640	367	1,007
NYCRIS	2,419	2,029	4,448
Oxford	1,341	1,442	2,783
Scotland	934	181	1,115
SWCIS	3,253	1,001	4,254
Thames	1,750	2,632	4,382
Trent	408	1,588	1,996
Wales	351	952	1,303
WMCIU	2,529	2,330	4,859
TOTAL	16,407	14,043	30,450

BCCOM Year 1 = primary symptomatic breast cancers diagnosed in 2002

BCCOM Year 2 = primary symptomatic breast cancers diagnosed in 2003

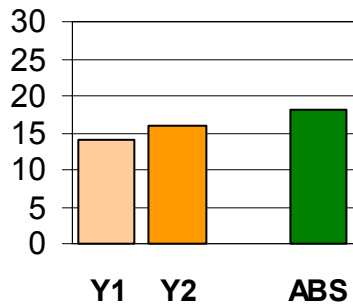
Cancer registry participation



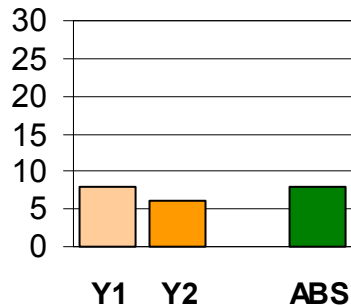
Y1 = Number of surgeons submitting data to BCCOM Year 1
Y2 = Number of surgeons submitting data to BCCOM Year 2

ABS = Number of surgeons member of the ABS at BASO in the region

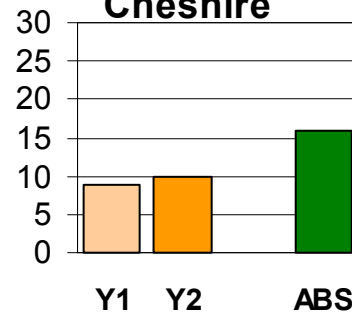
Oxford



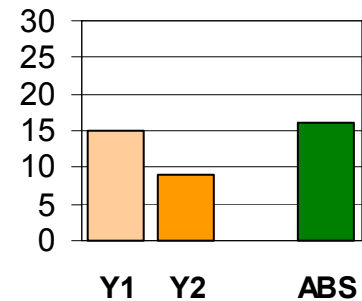
N. Ireland



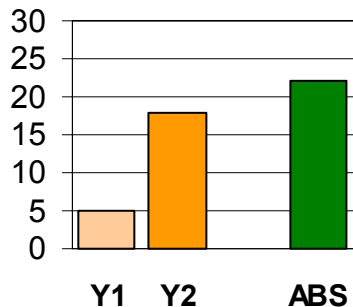
Mersyside & Cheshire



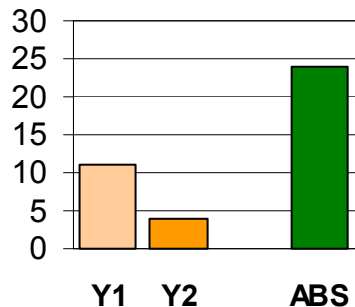
East Anglia



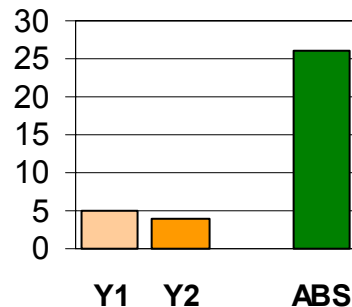
Wales



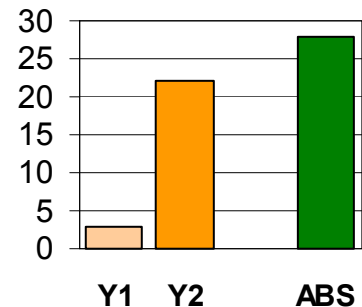
Scotland



North Western



Trent



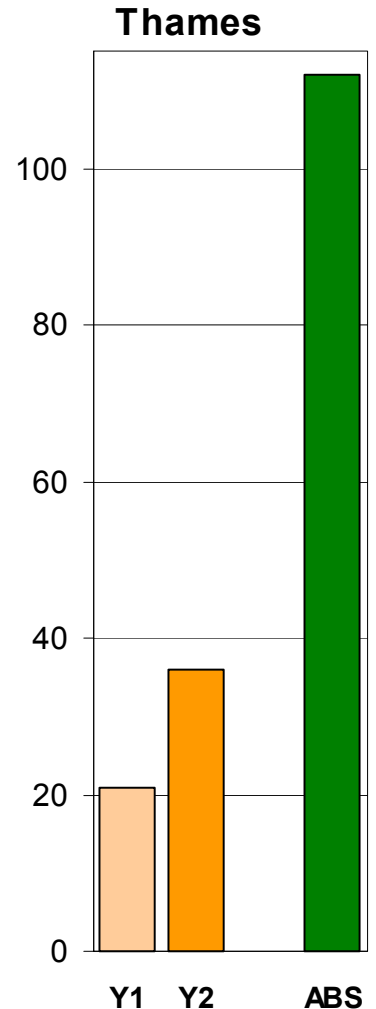
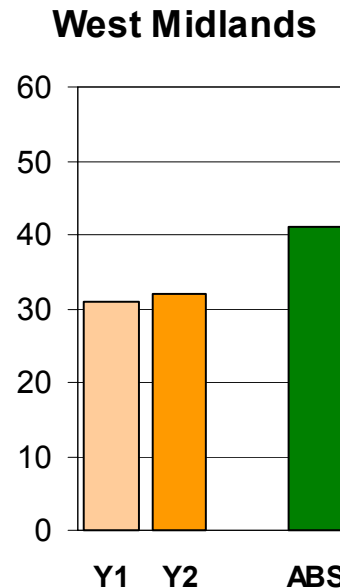
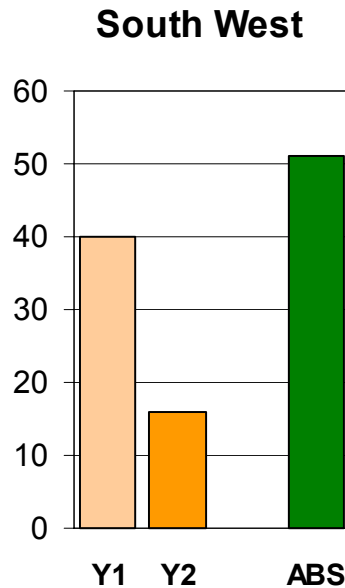
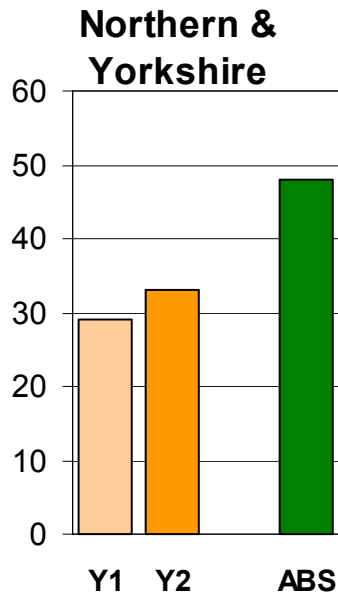


Cancer registry participation



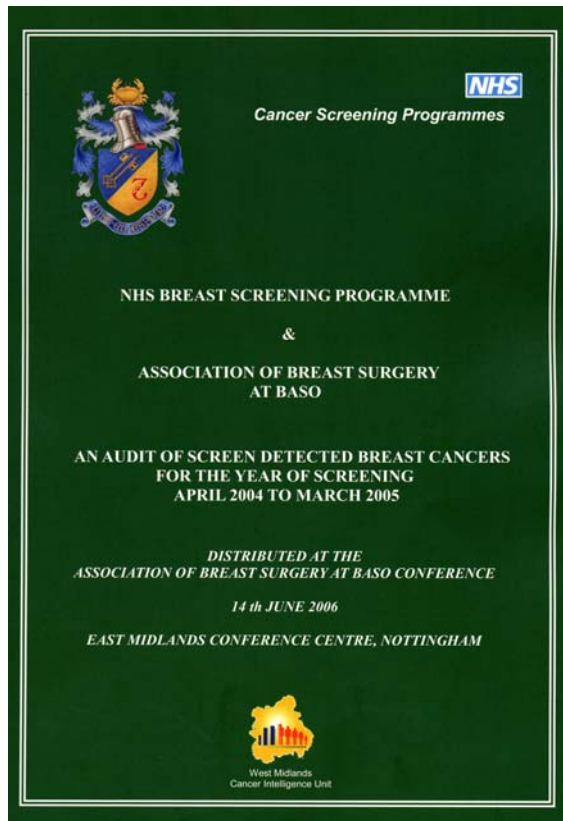
Y1 = Number of surgeons submitting data to BCCOM Year 1
Y2 = Number of surgeons submitting data to BCCOM Year 2

ABS = Number of surgeons member of the ABS at BASO in the region

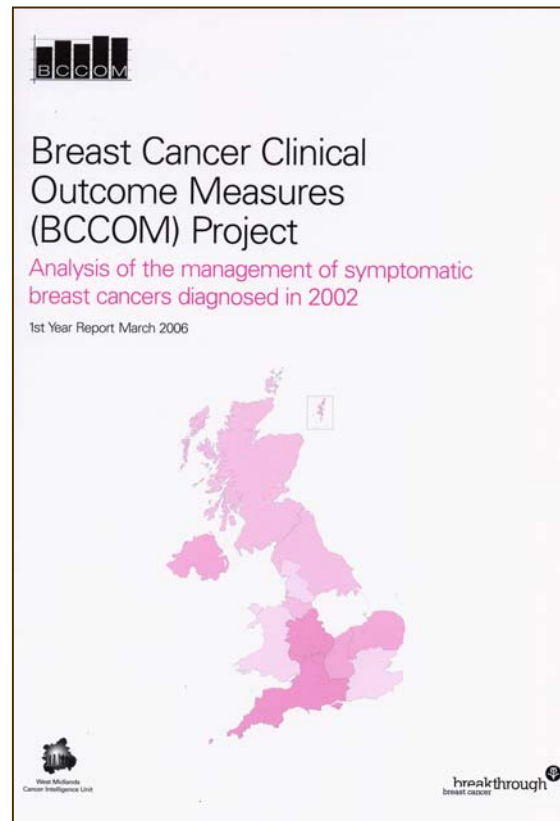




Sources of breast cancer data

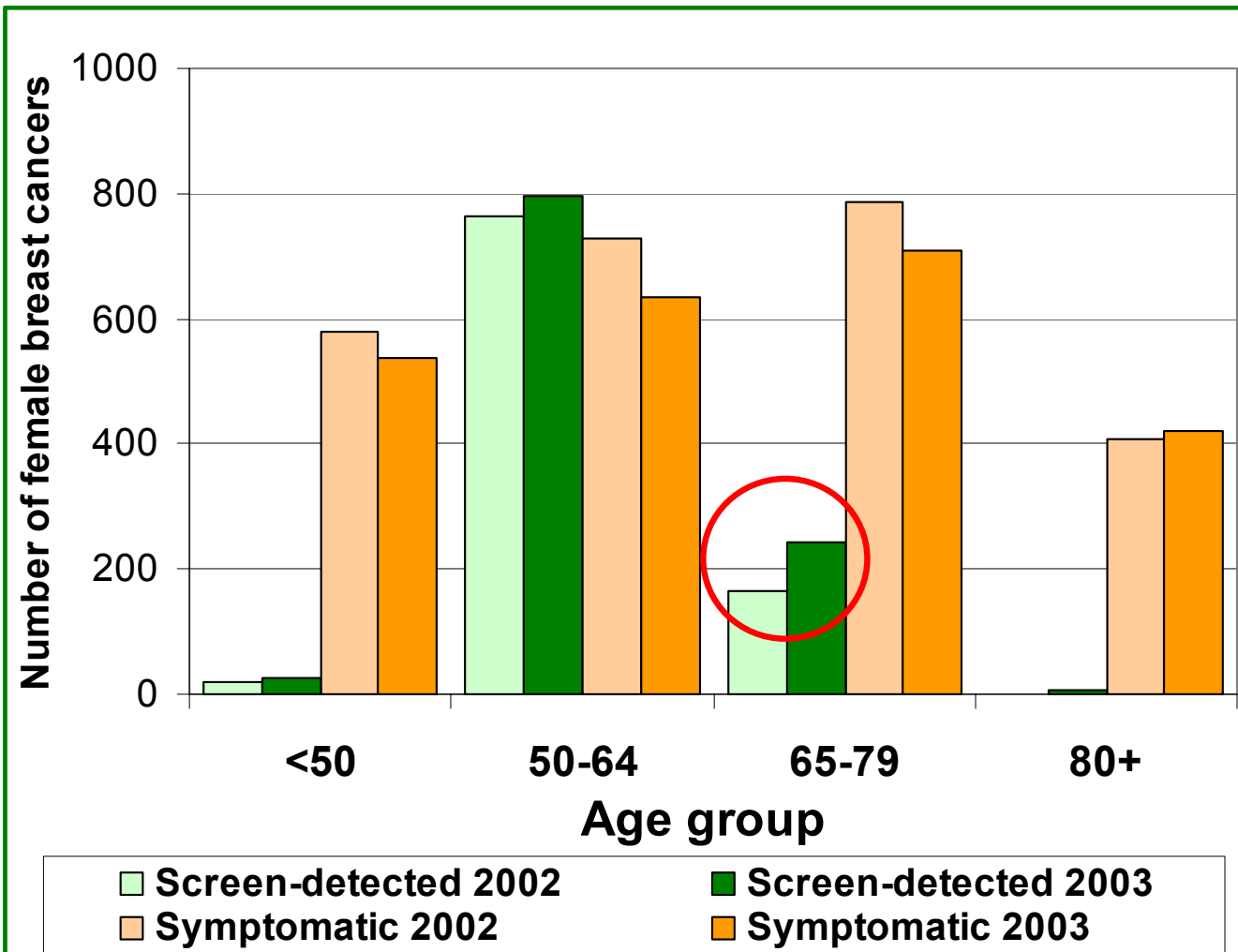


ABS at BASO Audit

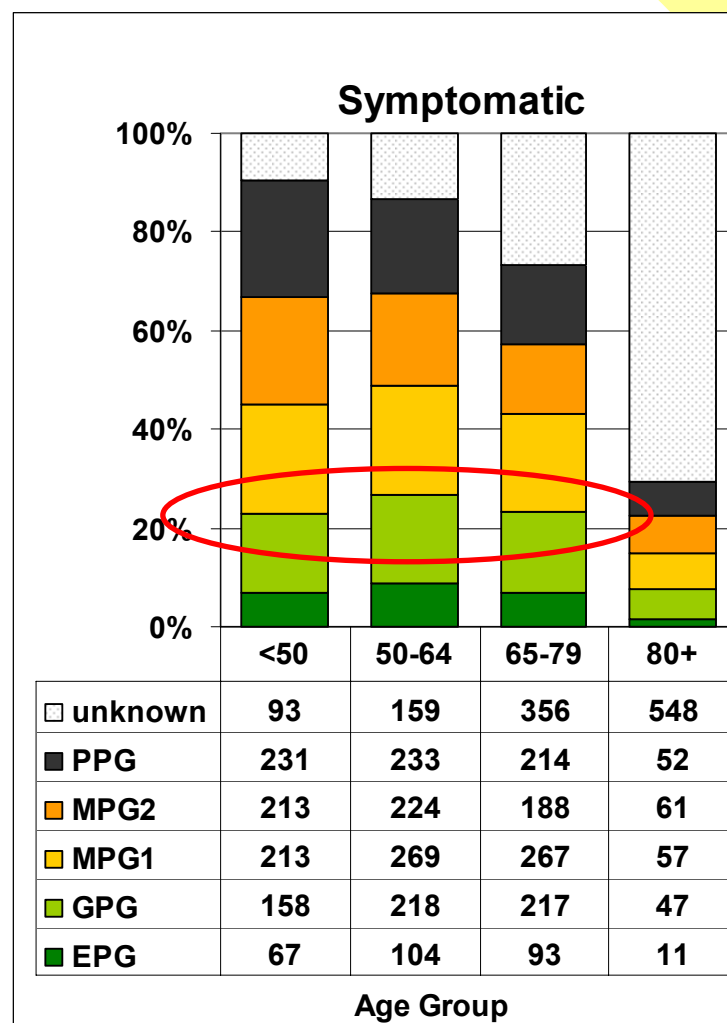
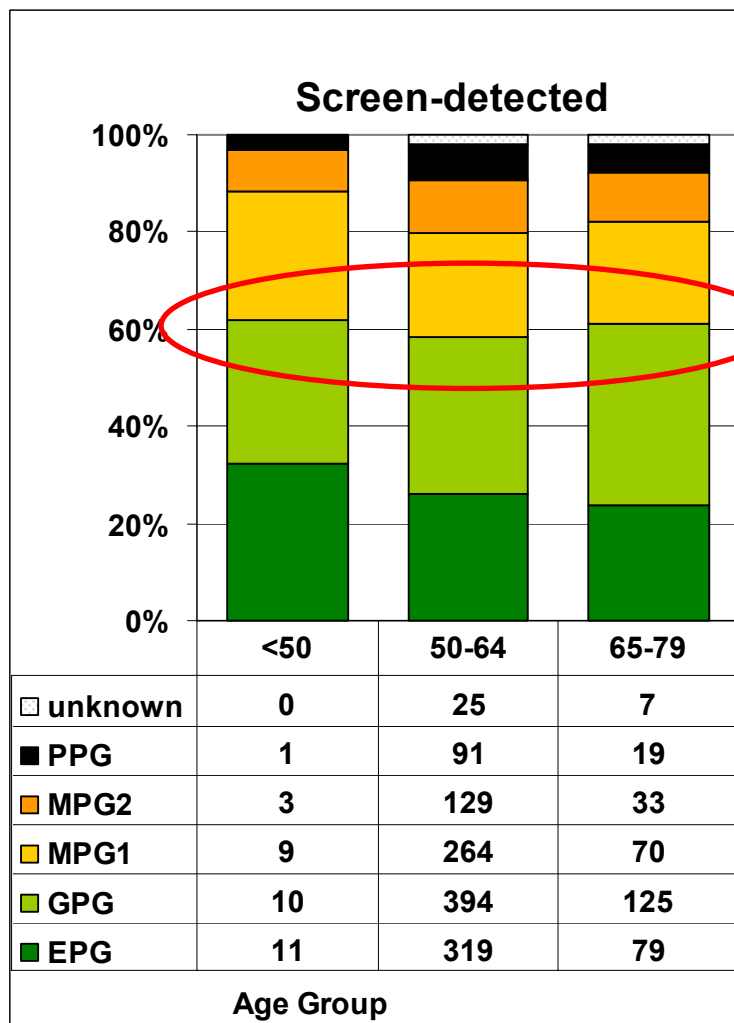


BCCOM

Variation in the number of breast cancers with age (West Midlands cases)



Variation in Nottingham Prognostic Index with age: WM Invasive breast cancers diagnosed in 2002/03





Variation in NPI with screening history (women aged 50-65; WM cases)



■ Screening vs Non screening

- Good: 59.6% 31.0%
- Mod: 32.8% 46.9%
- Poor: 7.6% 22.1%

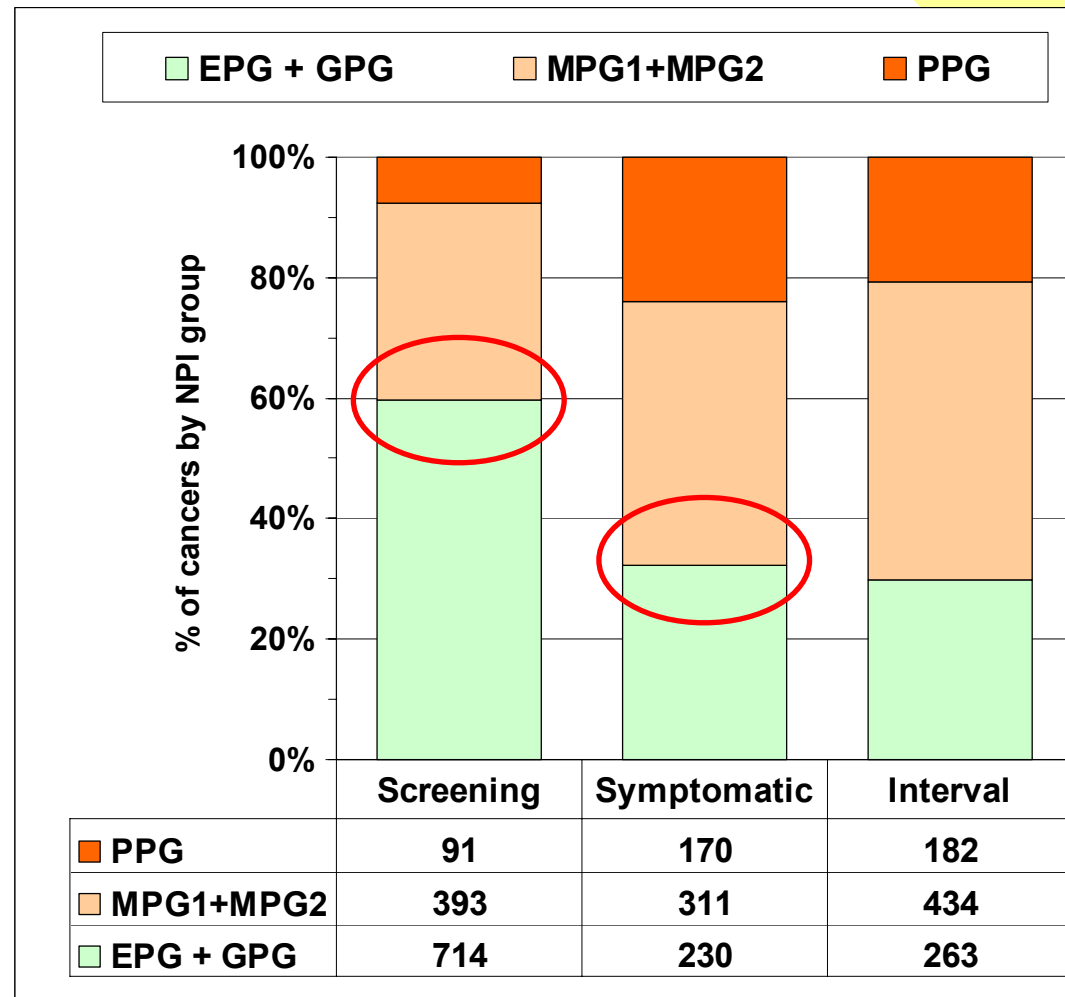
P < 0.001

■ Sympto vs Interval

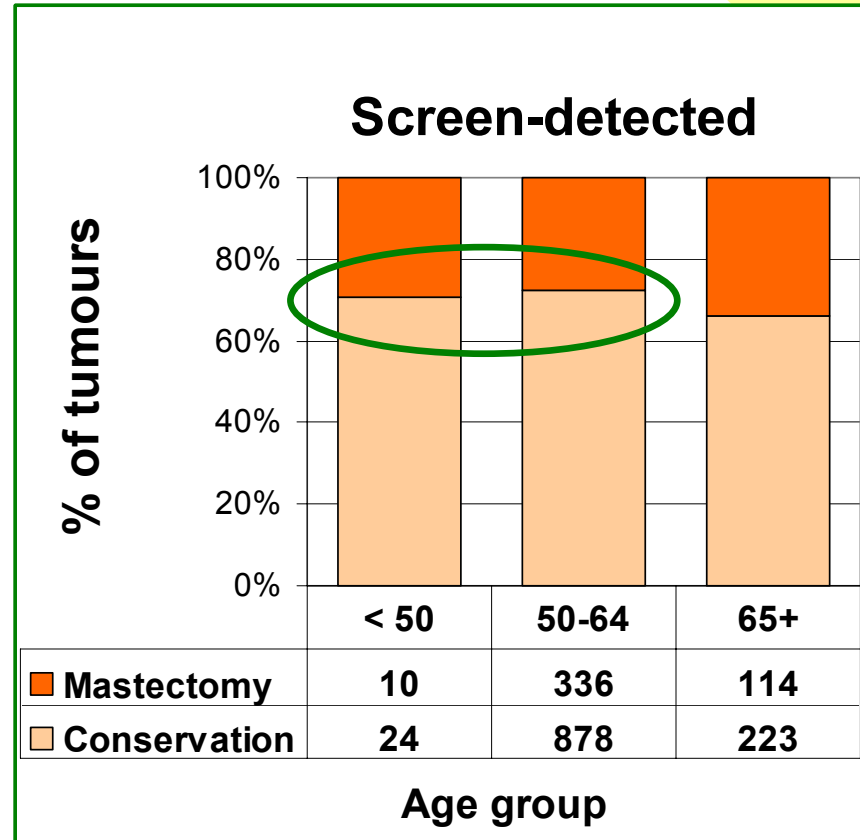
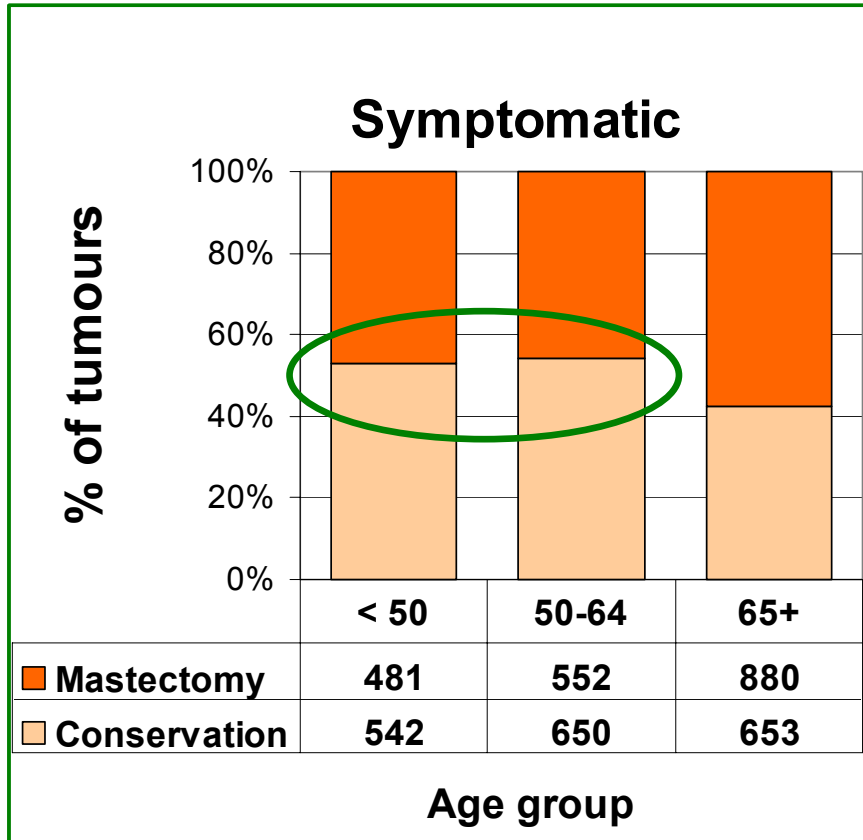
- Good: 32.3% 29.9%
- Mod: 43.7% 49.4%
- Poor: 23.9% 20.7%

P = 0.07

[Chi-squared test of association]



Variation in type of surgery with age group



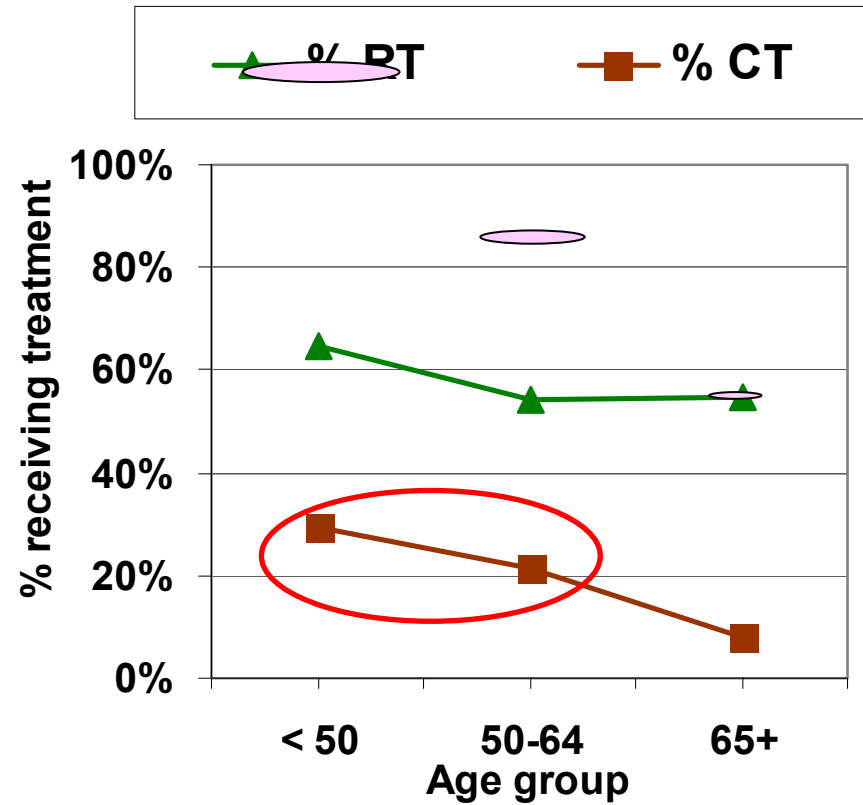
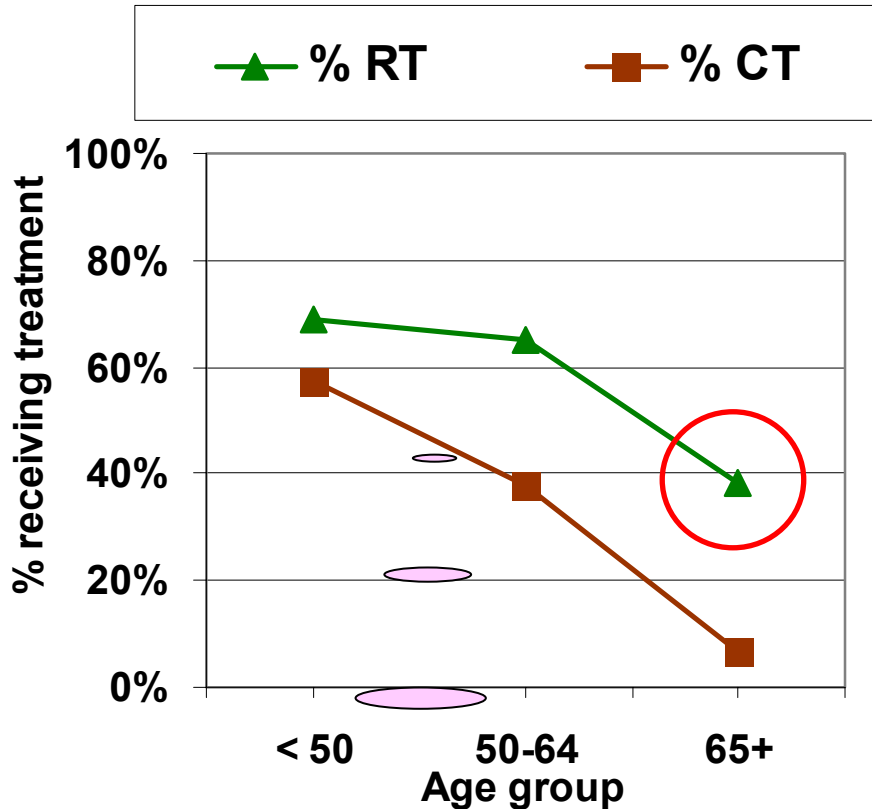
Variation in adjuvant therapy with age: WM Invasive BC (2002/03)



Less RT or data collection?

Symptomatic

Screen-detected



Higher NPI, more CT



Thank you to.....

Collaborators to the BCCOM project in the UK

Ms Karen Wright	Eastern Cancer Registration & Information Centre
Ms Lorraine Shack	Merseyside and Cheshire Cancer Registry
Ms Judith Stark	National Health Service in Scotland, Information and Statistics Division
Mr Michael Walkley	Northern and Yorkshire Cancer Registry and Information Service
Dr Richard Middleton	Northern Ireland Cancer Registry
Mr Robert Iddenden	North Western Cancer Registry Centre for Cancer Epidemiology
Ms Ann Watters	Oxford Cancer Intelligence Unit
Mr Neil Hanchett	Thames Cancer Registry
Ms Louise Hollingworth	Trent Cancer Registry
Mr Andy Pring	South West Public Health Observatory
Mr Ceri White	Welsh Cancer Intelligence and Surveillance Unit
Ms Rosie Day	West Midlands Cancer Intelligence Unit



Thank you

Thank you